



**Delhi Public School, Gandhinagar**  
**Periodic Test- I (2026-27)**

<b>Class I</b>	<b>Computer Science</b>	<b>Date: 00.07.2026</b>
<b>Time: hour</b>	<b>Sample Paper</b>	<b>M. Marks:</b>
<b>Name: _____ Sec: _____ Roll No.: _____</b>		

**General Instructions:**

- (i) There are 3 sections in this paper.
- (ii) All the questions are compulsory.
- (iii) Answer the questions as per given instructions.

**Section A**

**Q-I Picture Quiz.**

1. A \_\_\_\_\_ has many keys.



a) CPU



b) Keyboard



c) Mouse

2. \_\_\_\_\_ has two buttons and a scroll wheel.



a) Keyboard



b) Mouse



c) CPU

**Section B**

**Q-II Rearrange the jumbled words.**

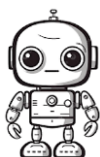
1.



**K E Y B O A D R**

--	--	--	--	--	--	--	--	--	--

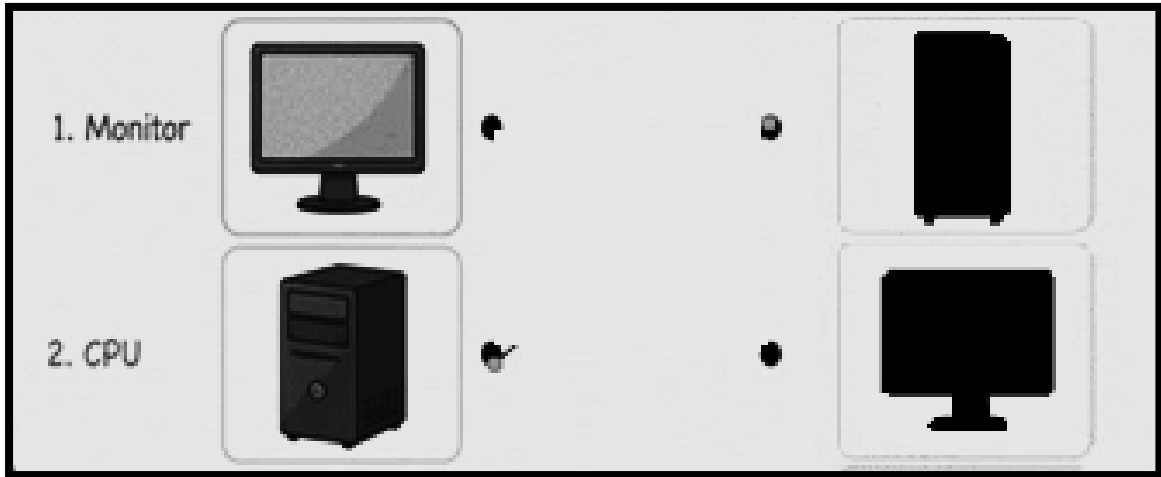
2.



**R O B T O**

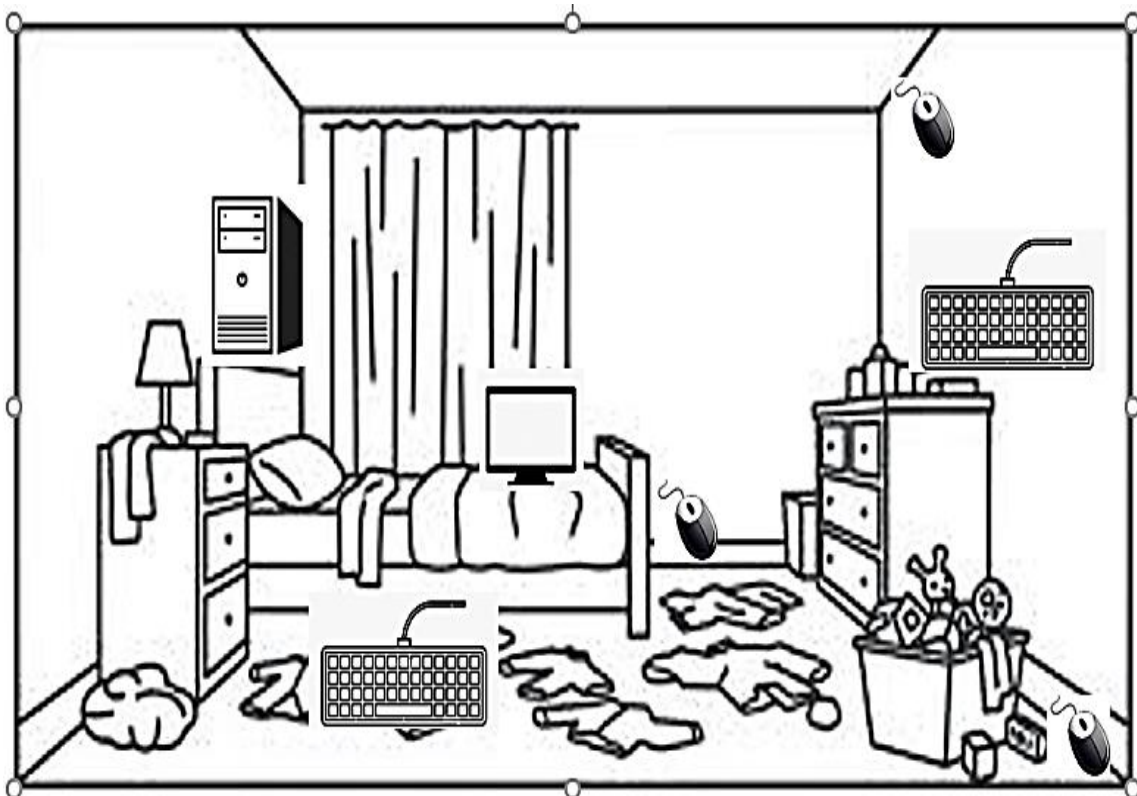
--	--	--	--	--	--	--	--	--	--

**Q-III Match the computer parts with their shadows.**



**Q-IV Find the hidden computer parts in the picture and write the correct number of each device in the boxes provided.**

**4x1=4**

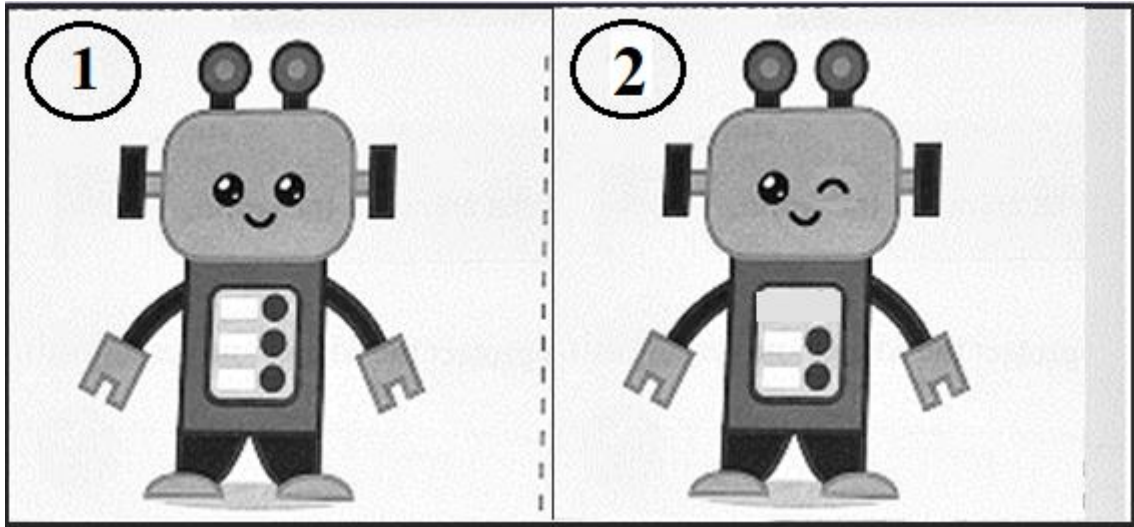


1. Monitor

2. Keyboard

### Section C

Q-V Identify any two differences between the two robots and circle those differences in the second robot.



Q-VI Word grid.

[ MOUSE, CPU ]

K	Y	U	B	O	A	R	D
S	T	Y	S	Z	X	R	X
T	R	B	Y	P	N	M	R
T	N	M	T	Y	M	P	E
O	N	U	C	P	U	R	H
L	H	I	L	I	Y	S	I
L	G	O	W	O	U	Q	J
M	O	U	S	E	T	E	R

**ANSWER KEY**  
**Section A**

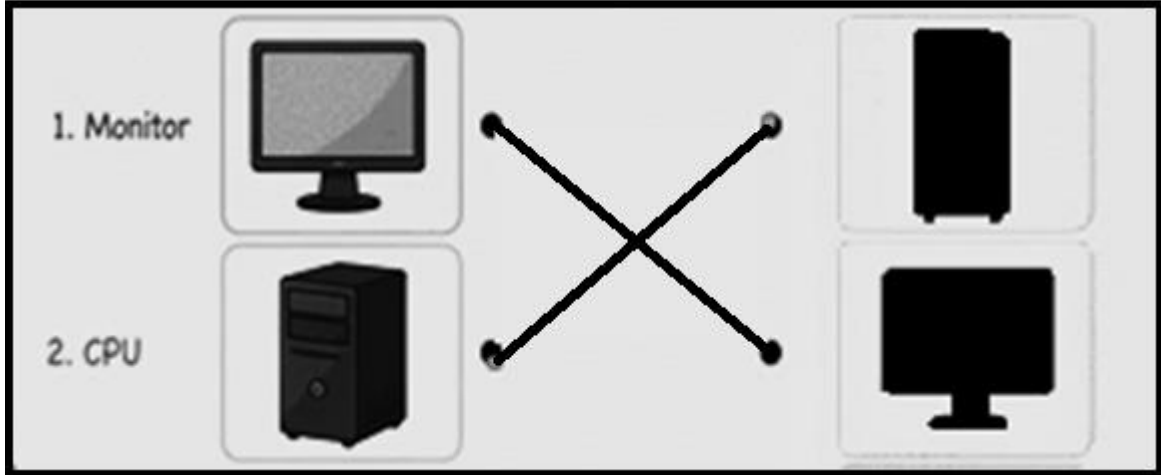
**Q-I Picture Quiz.**

1. a) Keyboard    2. b) Mouse

**Q-II Rearrange the jumbled words.**

1. KEYBOARD    2. ROBOT

**Q-III Match the computer parts with their shadows.**



**Q-IV Find the hidden computer parts in the picture and write the correct number of each device in the boxes provided.**

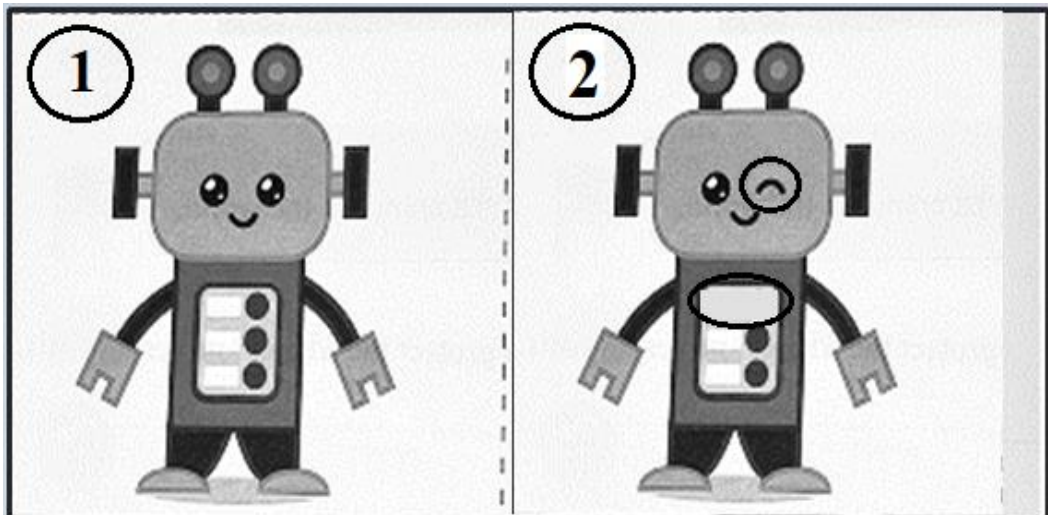
**4x1=4**

1. Monitor

2. Keyboard

**Section C**

**Q-V Identify any two differences between the two robots and circle those differences in the second robot.**



**Q-VI Word grid.**

[ MOUSE, CPU ]

K	Y	U	B	O	A	R	D
S	T	Y	S	Z	X	R	X
T	R	B	Y	P	N	M	R
T	N	M	T	Y	M	P	E
O	N	U	C	P	U	R	H
L	H	I	L	I	Y	S	I
L	G	O	W	O	U	Q	J
M	O	U	S	E	T	E	R