

DELHI PUBLIC SCHOOL GANDHINAGAR



MY BUDDY

Environmental Science

CLASS 5

Academic session-2026-27.

NAME: _____

SECTION: _____

ROLL NO.: _____





DELHI PUBLIC SCHOOL GANDHINAGAR
ACADEMIC SESSION 2026-27
CLASS – V
EVS SYLLABUS

TERM 1

MONTH	SUBJECT	CHAPTER	TEACHING METHODOLOGY	ACTIVITIES / PRACTICALS	LEARNING OUTCOMES [Value / Knowledge / Skill]	ASSESSMENT MAPPING	TOTAL PERIODS REQUIRED TO COMPLETE THE CHAPTER (HOURS)
APRIL	Science	L-1: Plant Reproduction	Diagram-based teaching (parts & process) Activity (seed germination experiment)	Vegetative propagation- Growing of money plant through stem cutting.	Knowledge: Explains modes of reproduction in plants. Values: Develops care for plants. Skills: Observes and records plant growth.	HPC Domain of Learning Activities Peer Assessment Formative Assessment	12 periods (6 hours)
		L-4: Matter-Solid, Liquid & Gas	Experiment-based learning (properties of matter) Inquiry method (predict and observe changes)	CBE WORKSHEET	Knowledge: Differentiates states of matter. Values: Develops scientific attitude. Skills: Classifies materials.	HPC Domain of Learning Activities Peer Assessment Formative Assessment	10 periods (5 hours)
MAY & JUNE	S.St. [Geography]	L-1: Mapping The World	Map work (continents & oceans) Visual learning (globe usage)	Map Work- Marking oceans and continents on world map.	Knowledge: Identifies continents and oceans. Values: Develops global awareness. Skills: Locates places on map.	HPC Domain of Learning Activities Peer Assessment Formative Assessment	10 periods (5 hours)
	Science	L-2: Keeping Healthy	Case Study Method students analyze real-life disease situations Observation & Survey – Collect data on common	Making sugar and oil board.	Knowledge: Understands importance of hygiene and diet. Values: Develops healthy lifestyle habits. Skills: Analyzing health situations.	HPC Domain of Learning Activities Peer Assessment Summative Assessment	8 periods (4 hours)
			diseases and hygiene practices in surroundings.				
JULY	Science	L-8: The Skeletal System	Model-based learning (skeleton model) Demonstration (joint movements)	SEA- Human body bones chart.	Knowledge: Identifies bones and functions. Values: Develops awareness for body care. Skills: Relates structure with movement.	HPC Domain of Learning Activities Peer Assessment Summative Assessment	12 periods (6 hours)
	S.St. [History]	L-18: Birth Of Indian National Movement	Storytelling (early leaders & events) Timeline activity	Paste picture of one freedom fighter and write his contribution during the revolt of 1857. (in scrap book)	Knowledge: Explains origin of national movement Values: Develops patriotism Skills: Arranges events chronologically	HPC Domain of Learning Activities Peer Assessment Summative Assessment	12 periods (6 hours)
PT-1 SYLLABUS	Science	L-1: PLANT REPRODUCTION L-4: MATTER-SOLID, LIQUID & GAS					
	S.St.	L-1: MAPPING THE WORLD					
AUGUST	Science	L-14: Our Environment	Discussion (environmental issues) Project-based learning (save environment)	AIL-Eco-Crafts: Create useful items from waste materials (pen holders from cans, bags from old clothes).	Knowledge: Understands components of environment Values: Develops responsibility towards nature Skills: Suggests conservation methods	HPC Domain of Learning Activities Peer Assessment Summative Assessment	6 periods (3 hours)
	S.St. [Civics]	L-20: Government In India	Role play (types of government) Discussion method	Reflection Journal- write a short note- What they learned about the Indian government. How they see their role as responsible citizens.	Knowledge: Identifies levels of government Values: Develops civic sense Skills: Explains roles of government	HPC Domain of Learning Activities Peer Assessment Summative Assessment	8 periods (4 hours)
SEPTEMBER	REVISION FOR HALF YEARLY EXAMINATION						
	Science	L-2: KEEPING HEALTHY					

HALF YEARLY EXAM SYLLABUS		L-8: THE SKELETAL SYSTEM L-14: OUR ENVIRONMENT
	S.St.	L-18: BIRTH OF INDIAN NATIONAL MOVEMENT L-20: GOVERNMENT IN INDIA

TERM 2

MONTH	SUBJECT	CHAPTER	TEACHING METHODOLOGY	ACTIVITIES / PRACTICALS	LEARNING OUTCOMES [Value / Knowledge / Skill]	ASSESSMENT MAPPING	TOTAL PERIODS REQUIRED TO COMPLETE THE CHAPTER(HOURS)
SEPTEMBER & OCTOBER	Science	L-9: Nervous System	Diagram-based teaching (brain, nerves) Activity (reflex action demonstration)	<u>AIL</u> - Mindfulness Exercise: Practice breathing or meditation to show how the nervous system calms the body.	Knowledge: Explains functions of nervous system Values: Develops awareness of body care Skills: Relates stimulus and response	HPC Domain of Learning Activities Peer Assessment Summative Assessment	10 periods (5 hours)
	S.St. [Geography]	L-2: Latitude And Longitude	Drill practice (finding coordinates)	Tracing the Grid: Latitude & Longitude with Wool.	Knowledge: Understands latitudes and longitudes Values: Develops accuracy and precision Skills: Locates places using coordinates	HPC Domain of Learning Activities Peer Assessment Summative Assessment	10 periods (5 hours)
NOVEMBER	Science	L-10: Force, Energy and Simple Machines	Demonstration (lever, pulley) Activity-based experiments	<u>SEA</u> -To understand the principle of levers (Class I, II, and III) by building simple models with ice cream sticks.	Knowledge: Explains force, energy, machines Values: Develops appreciation for inventions Skills: Applies concepts in daily life	HPC Domain of Learning Activities Peer Assessment Formative Assessment	10 periods (5 hours)
DECEMBER	Science	L-11: Air, Water and Weather	Experiment (air/water properties) Observation (weather chart)	CBE WORKSHEET	Knowledge: Explains weather and resources Values: Develops environmental awareness Skills: Records and interprets data	HPC Domain of Learning Activities Peer Assessment Formative Assessment	10 periods (5 hours)

	S.St. [History]	L-19: India Achieves Freedom	Storytelling (freedom struggle events) Role play (freedom fighters)	Flowchart- India's Freedom Struggle Timeline.	Knowledge: Describes key events of independence Values: Develops patriotism and respect Skills: Narrates historical events	HPC Domain of Learning Activities Peer Assessment Formative Assessment	10 periods (5 hours)
PT-2 SYLLABUS	Science	L-10: FORCE, ENERGY AND SIMPLE MACHINES L-11: AIR, WATER AND WEATHER					
	S.St.	L-19: INDIA ACHIEVES FREEDOM					
JANUARY	Science	L-12: Natural Calamities	Audio-visual learning (disaster videos) Discussion (safety measures)	Mock Drill- Disaster Management	Knowledge: Identifies types of disasters Values: Develops preparedness and empathy Skills: Suggests safety measures	HPC Domain of Learning Activities Peer Assessment Summative Assessment	10 periods (5 hours)
	S.St. [Civics]	L-21: United Nations	Discussion (functions of UN) Project (UN agencies)	Poster-making competition- "Global Unity, Shared Responsibility".	Knowledge: Understands role of United Nations Values: Develops global peace awareness Skills: Explains functions of agencies	HPC Domain of Learning Activities Peer Assessment Summative Assessment	10 periods (5 hours)
FEBRUARY	Science	L-13: Earth, Sun and Moon	Model-based learning (rotation/revolution) Audio-visual method	Eclipse Safety Rules.	Knowledge: Explains day-night and seasons Values: Develops curiosity about space Skills: Illustrates concepts clearly	HPC Domain of Learning Activities Peer Assessment Summative Assessment	10 periods (5 hours)
	REVISION FOR ANNUAL EXAMINATION						
ANNUAL EXAM SYLLABUS	Science	L-9: NERVOUS SYSTEM L-12: NATURAL CALAMITIES L-13: EARTH, SUN AND MOON					
	S.St.	L-2: LATITUDE AND LONGITUDE L-21: UNITED NATIONS					

INDEX

Sr. No.	CHAPTER NAME	PAGE NUMBER
	TERM I	
	SCIENCE:	
1.	L-1: PLANT REPRODUCTION	5
2.	L-4: MATTER SOLID, LIQUID & GAS	8
3.	L-2: KEEPING HEALTHY	11
4.	L-8: THE SKELETAL SYSTEM	14
5.	L-14: OUR ENVIRONMENT	17
	SOCIAL STUDIES:	
6.	L-1: MAPPING THE WORLD	20
7.	L-18: BIRTH OF INDIAN NATIONAL MOVEMENT	22
8.	L-20: GOVERNMENT IN INDIA	24
10.	Periodic Mock Test 1	26
11.	Half Yearly Mock Paper	28
	TERM II	
	SCIENCE:	
12.	L-9 THE NERVOUS SYSTEM	33
13.	L-10 FORCE, ENERGY, AND SIMPLE MACHINE	37
14.	L-11 AIR AND WATER	40
15.	L-12 NATURAL CALAMITY	44
17.	L-13 THE EARTH, THE SUN, AND THE MOON	47
	SOCIAL STUDIES:	
18.	L-2 LATITUDE AND LONGITUDE	51
19.	L-19 INDIA ACHIEVES FREEDOM	54
21.	L-21 UNITED NATIONS	56
22.	Periodic Mock Test 2	58
23.	Annual Exam Mock Paper	61

Ans

2. Name one more plant that grows this way.

Ans

3. Which part of the potato helps in growing a new plant?

Ans

4. Why is this method useful?

Ans

SOURCE BASED QUESTION:

Riya went for a walk in a garden. She noticed some seeds sticking to her socks. Later, she saw fluffy seeds flying in the air and some fruits floating in water near a pond.

Questions:

1. Why did some seeds stick to Riya's socks?

Ans

2. Which method of seed dispersal is shown by fluffy seeds?

Ans

3. Why do some fruits float in water?

Ans

4. Name one plant whose seeds are dispersed by animals.

Ans

5. How does seed dispersal help plants?

Ans

EXPERIMENT BASED QUESTION:

Aman planted two seeds. He watered one regularly and kept it in sunlight. The other seed was kept in a dry box without water or light. After a few days, only one seed sprouted.



Questions:

1. Which seed germinated and why?

Ans

2. List the conditions needed for germination.

Ans

3. What will happen if a seed does not get water?

Ans

4. Why is sunlight important after germination?

Ans

5. What is the first part that comes out during germination?

Ans

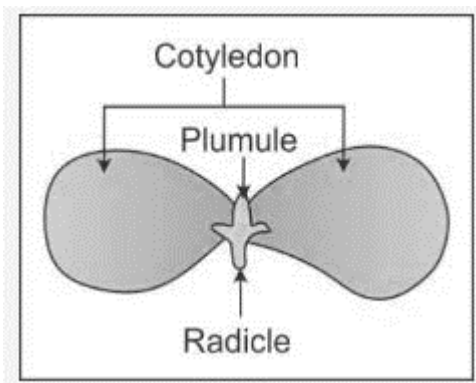
COMPUTATIONAL THINKING SKILL QUESTION:

Input–Process–Output Question

Input	Process	Output
Cotton seed	Wind blows	?

Question: Fill in the output column.

SEE THE DIAGRAM AND ANSWER THE FOLLOWING QUESTIONS:



1. Identify the type of seed? (Dicot/Monocot)

Ans

2. What is embryonic(baby) shoot called?

Ans

3. What is a baby plant called?

Ans

LESSON NO -4
MATTER- SOLID, LIQUID & GAS

COMPETENCY BASED QUESTIONS

1. Naphthalene balls are used in cupboards because they:

a) Melt into liquid	b) Freeze easily
c) Slowly change into gas	d) Absorb water
2. Aarav breaks a piece of chalk into smaller pieces again and again.



What is the smallest unit of matter he will finally reach?

- | | | | |
|---------|-------------|-------------|---------|
| a) Atom | b) molecule | c) particle | d) cell |
|---------|-------------|-------------|---------|
3. If the intermolecular force is more the intermolecular space will be-

a) maximum	b) minimum	c) equal	d) no change
------------	------------	----------	--------------
 4. What does it show-



- | | |
|--------------------------------------|--------------------------------|
| (a) Solids have fixed shape. | (b) Liquids have fixed volume. |
| (c) Liquids don't have fixed volume. | (d) None of these. |
5. When a substance brought in contact of heat, it starts-

(a) It starts emitting heat energy.	(b) It starts absorbing heat energy.
(c) It starts sharing heat energy.	(d) There will be no chnge.
 6. Which state of matter can fill an entire empty room?

(a) Gas	(b) solid	(c) liquid	(d) both(a)&(b)
---------	-----------	------------	-----------------
 7. When something is heated intermolecular force of attraction -

(a) increases	(b) decreases	(c) no change	(d) both(a)&(b)
---------------	---------------	---------------	-----------------
 8. Identify the change-



Breaking of glass

- | | | | |
|--------------|--------------|----------------|-------------------|
| (a) Physical | (b) Chemical | (c) reversible | (d) none of these |
|--------------|--------------|----------------|-------------------|
9. Identify the change-



Making of paneer

- | | | | |
|--------------|--------------|----------------|-------------------|
| (a) Physical | (b) Chemical | (c) reversible | (d) none of these |
|--------------|--------------|----------------|-------------------|
10. Select the correct option-
Statement (A): In a saturated solution no more solute can be dissolved.
Reason (R): In a saturated solution, still there is some inter molecular space left.

(a) Statement and reason both are correct	(b) Statement and reason both are wrong
---	---

(c) Statement is correct and reason is wrong (d) Statement is wrong and reason is correct

WRITE TRUE OR FALSE AND CORRECT THE FALSE STATEMENT AND REWRITE IT.

1. Two liquids which cannot mix with each other are called miscible liquids. _____

CORRECT-

2. Chemical changes are irreversible changes. _____

CORRECT-

GIVE REASON:

Burning of wood is a chemical change.

Reason: _____

WRITE ONE WORD FOR THE FOLLOWING:

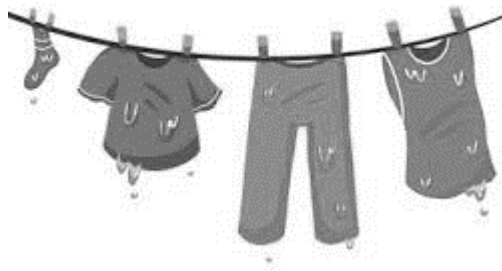
1. The stage when a solution can no longer dissolve a solute. _____

2. A change which is reversible. _____

CASE BASED QUESTION:

Wet Clothes Drying

After washing clothes, Aarav hung them outside in the sun. After a few hours, the clothes became dry.



Questions:

- i) What happened to the water in the clothes?

Ans. _____

- ii) Which state of matter is water changing into?

Ans _____

- iii) What is this process called?

Ans _____

- iv) Name one factor that helps clothes dry faster.

Ans _____

SOURCE BASED QUESTION:

Water is called a universal solvent as it dissolves most of the substances in it.

Solids-some substances get dissolved in water easily and form solution. e.g. salt and sugar get dissolved in water to form a solution.

However, some substances do not get dissolved in water e.g. chalk powder, sand etc.

Liquids – Some liquids are soluble in water e.g. milk, fruit juice gets mixed in water. However, some liquids like petrol, diesel does not get mixed in water

Gases – Some gases get dissolved in water e.g. oxygen and hydrogen, nitrogen etc.

Questions:

- i) Why is water known as universal solvent?

Ans _____

- ii) Give examples of substance that do not dissolve in water?

Ans _____

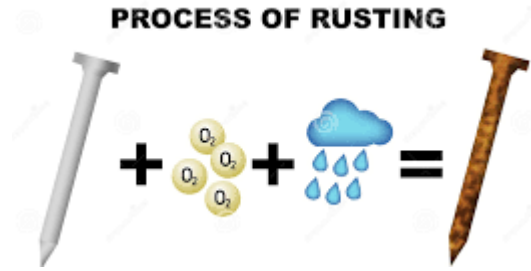
- iii) Give examples of gases that do not dissolve in water?

Ans _____

EXPERIMENT BASED QUESTION:

Rusting of Iron

An iron nail was kept in water for several days. A reddish-brown layer (iron oxide) formed on it.



Questions:

- i) What change took place on the iron nail?

Ans _____

- ii) Is this a physical or chemical change? Why?

Ans _____

- iii) Can this change be reversed easily?

Ans _____

COMPUTATIONAL THINKING SKILL QUESTION:

Sorting Materials

Riya has four glasses of water. She adds the following substances separately:
Salt, Sand, Sugar, Chalk powder.



She notices that some substances dissolve and some do not.

Question:

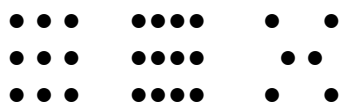
Create two groups, and divide them according to the solubility.

- i) Group A: Soluble substances _____
- ii) Group B: Insoluble substances _____

SEE THE DIAGRAM AND ANSWER THE FOLLOWING QUESTIONS:

Identify the States of Matter

[A] [B] [C]



Question: Observe the particle arrangement carefully and answer:

- i) Which diagram shows a **solid**?

Ans _____

- ii) In which state are particles packed most closely?

Ans _____

- iii) In which state of matter the inter molecular space is maximum?

Ans _____

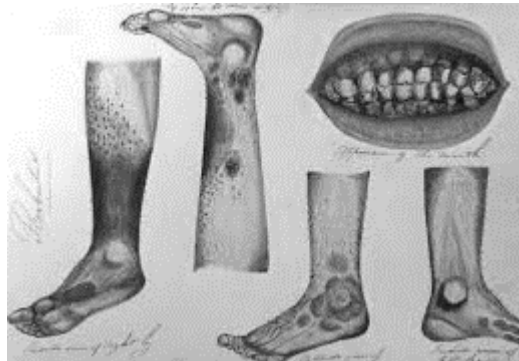
- iv) In which state of matter the inter molecular force is minimum?

Ans _____

LESSON NO -2
KEEPING HEALTHY

COMPETENCY BASED QUESTIONS

1. Which of the following diseases can spread from one person to another?
 (a) Communicable diseases (b) Deficiency diseases
 (c) Non communicable diseases (d) Heart attack
- The other name of communicable disease is-
2. (a) Night blindness (b) Infectious diseases
 (c) Rickets (d) Non-communicable diseases
 3. Diseases caused due to lack of nutrients are called:
 (a) Communicable diseases (b) Hereditary diseases
 (c) Deficiency diseases (d) Infectious diseases
 4. Which of the following is a communicable disease?
 (a) diabetes (b) allergy (c) common cold (d) fracture
 5. Which of the following is a non-communicable disease?
 (a) cholera (b) measles (c) diabetes (d) flu
 6. Germs that cause diseases are called:
 (a) nutrients (b) pathogens (c) minerals (d) vaccine
 7. Which of these helps prevent diseases?
 (a) Eating stale food (b) Maintaining hygiene
 (c) Drinking dirty water (d) Not exercising
 8. Identify the disease-



9. Fainting and fatigue, pale skin, shortness of breath, are the symptoms of-
 (a) anaemia (b) scurvy (c) rickets (d) goiter
10. Select the correct option-
Statement (A): Malaria is a communicable disease.
Reason (R): Malaria spreads through mosquito bites.
 (a) Statement and reason both are correct (b) Statement and reason both are wrong
 (c) Statement is correct and reason is wrong (d) Statement is wrong and reason is correct

WRITE TRUE OR FALSE AND CORRECT THE FALSE STATEMENT AND REWRITE IT.

- i) Goiter is caused by the deficiency of iodine.
CORRECT: _____.
- ii) Vaccination is a process of developing immunity.
CORRECT: _____.

GIVE REASON:

We should exercise regularly.

Ans _____

WRITE ONE WORD FOR THE FOLLOWING:

- i) Condition in which the body or a part of body does not function normally. _____
- ii) To make something impure. _____

SOURCE BASED QUESTION:

Health is God's gift to us. Health refers to the physical and mental state of a human being. To stay healthy is not an option but a necessity to live a happy life. The basic laws of good health are related to the food we eat, the amount of physical exercise we do, our cleanliness, rest, and relaxation. A healthy person is normally more confident, self-assured, sociable, and energetic. A healthy person views things calmly, and without prejudice.

i) What does health refer to?

Ans

ii) What are the basic components of good health?

Ans

iii) Which type of persons are confident, self-assured and sociable?

Ans

EXPERIMENT BASED QUESTION:

Healthy Food Experiment

A student ate junk food daily for one week and felt tired and weak. Another student ate fruits, vegetables, and healthy food and remained active.



Question:

i) What does this experiment teach us?

Ans

ii) What else you suggest to remain healthy?

Ans

CASE BASED QUESTION:

The School Health Camp



Aarav plays football every evening. He drinks plenty of water, washes his hands before eating, and eats fruits and vegetables daily. He rarely falls sick.

Questions:

i) Which healthy habit helps Aarav stay fit?

(a) Not exercising

(b) Playing football regularly

- (c) Eating only sweets
- (d) Sleeping very late
- ii) Why should we wash our hands before eating?
- (a) To remove germs
- (b) To waste water
- (c) To make hands cold
- (d) To dry the skin
- iii) Which food is good for health?
- (a) Fruits and vegetables
- (b) Chips and soft drinks
- (c) Only chocolates
- (d) Fried food only
- iv) Drinking enough water helps to:
- (a) Keep the body hydrated
- (b) Cause illness
- (c) Reduce energy
- (d) Make us weak

SEE THE DIAGRAM AND ANSWER THE FOLLOWING QUESTIONS:

SPREAD OF GERMS

The teacher applied glitter on one student's hands and asked the student to shake hands with classmates. Soon, the glitter spread to many students.



Questions:

In this experiment, glitter represents:

- (a) Germs
- (b) Water
- (c) vitamins
- (d) Food particles
- i) What does the activity show?
- (a) Germs spread easily from person to person
- (b) Glitter disappears quickly
- (c) Handshakes are harmful
- (d) Germs cannot spread
- ii) Which habit can reduce the spread of diseases?
- (a) Covering mouth while coughing or sneezing
- (b) Sharing used tissues
- (c) Not washing hands
- (d) Drinking dirty water
- iii) Which disease can spread through germs?
- (a) Common cold
- (b) Broken bone
- (c) Allergy
- (d) Hair growth

COMPUTATIONAL THINKING SKILL QUESTION:

LOGICAL THINKING QUESTION

A virus is spreading in a town. Four children followed different habits:

Riya: Washes hands and takes vaccines

Kabir: Eats junk food and skips vaccination

Meera: Exercises daily and keeps clean

Aman: Does not cover his mouth while coughing

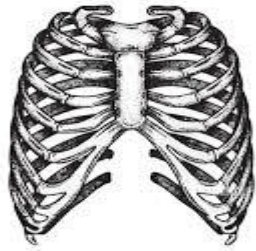
Questions:

- i) Which child is most likely to stay healthy?
- (a) Kabir
- (b) Aman
- (c) Riya
- (d) None
- ii) Which child may spread germs to others?
- (a) Meera
- (b) Aman
- (c) Riya
- (d) All

LESSON NO -8
THE SKELETAL SYSTEM

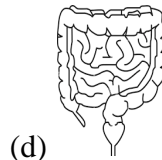
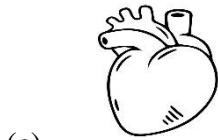
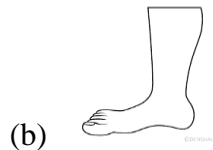
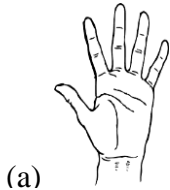
COMPETENCY BASED QUESTIONS

1. Look at the given diagram carefully.



2. Which are the organs that the above given bones protect?
 (a) Heart (b) Lungs (c) Heart and Lungs (d) Liver

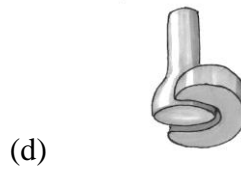
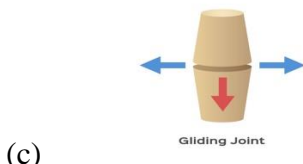
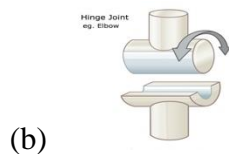
3. Which of the following parts of the human body has involuntary muscles?



4. What enables us to swing our arms as shown in the picture?



- (a) Ball and socket joint (b) Hinge joint
 (c) Pivot joint (d) Gliding joint
5. The function of the skeletal system is to-
 (a) Give shape and support to the body (b) Unable us to move
 (c) Produces blood cells (d) All of the above
6. Our Skeleton is made up of-
 (a) Skull, ribcage, backbone (b) Two girdles
 (c) 2 pairs of limbs (d) All of these together
7. Which joint allows movement only in one direction?



8. Immovable joints are found in-
 (a) Hands and legs (b) Joints in skull (c) Between ribs and chest bone (d) Both (b) and (c)
9. What is the soft tissue connecting bones called?

- (a) Ligament (b) muscle (c) Skin (d) cartilage

10. **Statement:** Muscles and bones work together for movement.

Reason: Bones cannot move by themselves.

- (a) Statement and reason both are correct (b) Statement and reason both are wrong
 (c) Statement is correct and reason is wrong (d) Statement is wrong and reason is correct

WRITE TRUE OR FALSE AND CORRECT THE FALSE STATEMENT AND REWRITE IT.

i) Breast bone is an example of round bone.

Correct: _____.

ii) Nose is made up of tough tissue called cartilage.

Correct: _____.

GIVE REASON:

Cardiac muscles are involuntary in nature

Ans

WRITE ONE WORD FOR THE FOLLOWING:

i) These are the small bones of the backbone. _____

ii) It is the place where two bones meet. _____

SOURCE BASED QUESTION:

Bones are composed of calcium, phosphorus, and a fibrous substance known as collagen. Bones are strong but light in weight as they are hollow from inside. The long bones of the arms and legs, such as the femur (thigh bone), have a central cavity containing bone marrow. Bone marrow is the flexible tissue in the interior of bones. In humans, red blood cells are produced by bone marrow. Usually, child is born with 300 soft bones. With the growth of child, these bones fuse together and an adult person has 206 bones. The smallest bone is stapes which is present inside our ear.

i) What are bones made up of?

Ans

ii) Write the number of bones present in an adult human.

Ans

iii) Name the smallest bone present in a human body?

Ans

iv) Where are red blood cells produced in a human body?

Ans

CASE BASED QUESTION:

Healthy Bones



Meera drinks milk every day and plays outdoor games regularly. Her mother says that healthy food and exercise help keep bones strong.

QUESTIONS:

i) Which mineral is important for strong bones?

- (a) Iron (b) calcium (c) iodine (d) sodium

ii) Which food is a good source of calcium?

- (a) chips (b) Soft drink (c) milk (d) candy

iii) Why is exercise important for bones?

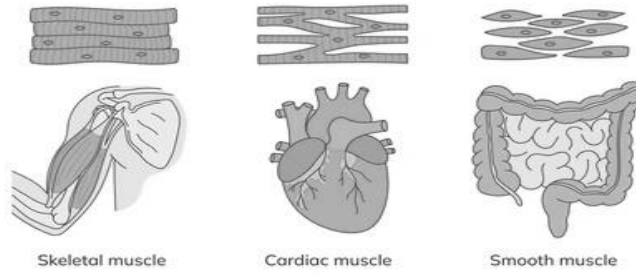
Ans

iv) State two ways to keep bones healthy.

Ans

SEE THE DIAGRAM AND ANSWER THE FOLLOWING QUESTIONS:

Study the following picture of **Types of muscles** and answer the following questions-



- i) Which type of muscles are Skeletal muscles ? Voluntary/Involuntary
Ans
- ii) Where in our body are cardiac muscles found?
Ans
- iii) Where in our body are smooth muscles found? Are they voluntary?
Ans
- iv) Which tissue joins the muscles to bones?
Ans

COMPUTATIONAL THINKING SKILL QUESTION:

Sequencing Question



Arrange the following steps in the correct order to show how movement happens:

- 1. Bones move
- 2. Brain sends signals
- 3. Muscles pull the bones
- 4. Joints help movement

Ans CORRECT ORDER- _____

**LESSON NO-14
OUR ENVIRONMENT**

COMPETENCY BASED QUESTIONS

1. What is the greenhouse effect?

(a) Cooling of Earth's surface	(b) Trapping of heat in Earth's atmosphere
(c) Formation of clouds	(d) Reflection of sunlight only
2. Which gas is mainly responsible for the greenhouse effect?

(a) Oxygen	(b) Nitrogen	(c) Carbon Dioxide	(d) Helium
------------	--------------	--------------------	------------
3. Which human activity increases the greenhouse effect the most?





(a) Planting trees	(b) Burning fossil fuels
(c) Recycling waste	(d) Saving water

What is a major result of the greenhouse effect?

(a) Global warming	(b) Earthquakes	(c) Flood only	(d) Soil formation
--------------------	-----------------	----------------	--------------------
4. Why wild animals are forced to flee from their natural habitat

(a) Burning down of trees	(b) Cutting of trees
(c) Due to their hunting for medicinal value	(d) All of the above
5. We can reduce waste generation by adopting this rule-

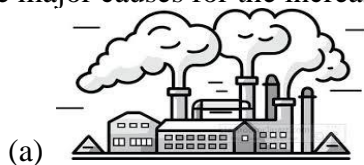
(a) Reduce	(b) Reuse	(c) Recycle	(d) All of them
------------	-----------	-------------	-----------------
6. Recognise the endangered animal from the following-

	
(a) The great Indian bustard	(b) Lion
	
(c) Zebra	(d) Crocodile
7. Which practice amongst following is the best example of Reuse-

(a) Use old things to make new items	(b) Give away your old books
(c) Give away your old books	(d) All of the above
8. We can Recycle-

(a) glass	(b) plastic	(c) metal	(d) All of the above
-----------	-------------	-----------	----------------------
9. Which amongst the following is not a greenhouse gas-

(a) CFC3	(b) Methane	(c) Oxygen	(d) Nitrous oxide
----------	-------------	------------	-------------------
10. The major causes for the increase in the greenhouse gases are-



WRITE TRUE OR FALSE AND CORRECT THE FALSE STATEMENT AND REWRITE IT.

- i) Increase in the level of greenhouse gases does not increase the temperature of the earth's atmosphere.
CORRECT _____.
- ii) Global warming is a threat to biodiversity.
CORRECT _____.

Give Reason:

Global warming causes rise in sea level.

Ans _____

WRITE ONE WORD FOR THE FOLLOWING:

- i) Unusual warming of Earth due to greenhouse gases. _____
ii) Blanket of air around the earth. _____

CASE BASED QUESTION:

A family uses cloth bags for shopping, donates old clothes to needy people, and sends newspapers for recycling.

- i) Match the activities with the correct R:

Activity	R
Using cloth bags	Reduce
Donating old clothes	Reuse
Sending newspapers for recycling	Recycle

- ii) Which of the 3 Rs do you think has the greatest impact on reducing waste? Give a reason for your answer.

Ans _____

SOURCE BASED QUESTION:

When the Earth's surface is heated upon by the radiations from the Earth, it results in increased temperature than is generally required, this process is known as the greenhouse effect. Most of the greenhouse gases are responsible to cause the greenhouse effect by radiating energy in all directions. The earth's surface absorbs most part of this radiation that results in its warming. The strength of this effect depends upon the atmosphere's temperature and the number of greenhouse gases present in the atmosphere. The primary greenhouse gases known are water vapour (H₂O), carbon dioxide (CO₂), methane (CH₄), nitrous oxide (N₂O), and ozone (O₃). As greenhouse gas emissions blanket the Earth, they trap the sun's heat. This leads to global warming and climate change. Warmer temperatures over time are changing weather patterns and disrupting the usual balance of nature.

- i) Explain Green House effect?

Ans _____

- ii) What causes Green House Effect?

Ans _____

- iii) Which part of the Earth absorbs most part of Earth's radiation?

Ans _____

- iv) Write two effects caused by warmer temperatures over time

Ans _____

EXPERIMENT BASED QUESTION:

Air Pollution Experiment

Riya kept two white cloth pieces in different places for 5 days. One cloth was kept near a busy road and the other in a garden.

After 5 days:

Cloth near the road became black and dusty.

Cloth in the garden remained cleaner.



Questions:

- i) Why did the cloth near the road become dirty?
 (a) Because of clean air (b) Because of air pollution
 (c) Because of rain (d) Because of sunlight
- ii) Which place had cleaner air?
 (a) Busy road (b) Garden (c) Both places (d) None
- iii) Name one source of air pollution.

Ans _____

- iv) Why did the cloth near the road become dirty?

Ans _____

COMPUTATIONAL THINKING SKILL QUESTION

Decision-Making (HOTS) Question

A family wants to reduce its contribution to global warming. They can do only **two** of the following:

Use LED bulbs

Plant trees

Leave electrical appliances on standby

Use bicycles for short distances

Which two actions should they choose and why?

a- _____

b- _____

What are the harmful effects (2) of keeping the electrical appliances on standby?

a- _____

b- _____

LOOK AT THE PICTURE AND ANSWER THE FOLLOWING QUESTIONS:



- i) What is the picture representing?

Ans _____

- ii) What is the reason behind this phenomenon?

Ans _____

- iii) Write its effects.

Ans _____

- iv) What measures can be adopted to reduce this effect?

Ans _____

LESSON NO -1
MAPPING THE WORLD

COMPETENCY BASED QUESTIONS

1. There are ____ continents and ____ oceans on Earth.
(a) 5,7 (b) 7,7 (c) 7,5 (d) 5,5
2. The Earth looks blue when seen from space, because-
(a) Of the atmosphere (b) Everyone loves blue colour
(c) 70% Of earth's surface is covered with water (d) None of these
3. Rohan is standing facing East. He turns to his left. Which direction is he facing now?



- (a) west (b) south (c) north (d) east
4. Which colour is used to show plains -
(a) blue (b) green (c) brown (d) orange
5. It's not that convenient to use globe for study purpose, because-
(a) Only half of the earth's surface can be seen at a time (b) It's difficult to carry it everywhere
(c) It has to be rotated to see the other half (d) All of these
6. Which among the following are the language of the map?
(a) colour (b) sign (c) symbol (d) All of the above
7. People who make maps-
(a) Cartographer (b) Artists (c) Astronauts (d) Painter
8. Atlas is a book which contains only-
(a) drawings (b) pictures (c) graphs (d) maps
9. A teacher asked students to identify the direction in between East and South. The correct answer is-
(a) South East (b) North East (c) South West (d) North West
10. During a class activity, students were asked to identify the map that shows countries, capitals, and boundaries. Which map should they choose?
(a) Physical (b) Political (c) Railway (d) Road

WRITE TRUE OR FALSE AND CORRECT THE FALSE STATEMENT AND REWRITE IT.

- i) The largest water bodies are called sea. _____
CORRECT-_____
- ii) The shallow water bodies are shown using dark blue colour in map. _____
CORRECT-_____

GIVE REASON:

A map is always preferred to a globe.

Ans _____

WRITE ONE WORD FOR THE FOLLOWING:

- i) Study of map making. _____
- ii) Book of Maps. _____

SOURCE BASED QUESTION:

Maps are two-dimensional representation of Earth or its region. A collection of maps is called as Directions, colour symbols and scale are elements of a map there are four different types of maps as shown below.

Types of Maps

- **Political Maps** - Shows the boundaries and locations of countries, states, cities, towns. These boundaries and locations are determined by governments rather than nature.
- **Physical Maps**- Shows landforms, bodies of water and other geographical features
 - **Road Maps** - Displays roads and transport links
- **Thematic Maps** - Shows a particular theme connected with a specific geographic area e.g. Percentage population changes.

Scale - Ratio between the size of the map and the area shown. 1 cm:100 km means 1 cm on map is equivalent to 100km in actual distance.

i) What are Maps?

Ans _____

ii) What are elements of a map?

Ans _____

iii) What does a Road map display?

Ans _____

iv) What does “1 cm : 100 km” means?

Ans _____

SEE THE DIAGRAM AND ANSWER THE FOLLOWING QUESTIONS:

Map Scales

Word Scale

1 cm = 8 km

- > A stated scale says exactly how much distance is represented by 1 cm, in this case, 8 km.
- > It is the most useful scale for **calculating distances.**



i) Define Map scale.

Ans _____

ii) How much km, 1cm represents?

Ans _____

iii) What is the use of map scale?

Ans _____

LESSON NO -18
BIRTH OF INDIAN NATIONAL MOVEMENT

COMPETENCY BASED QUESTIONS

1. Who came first to India for trade-
(a) French (b) Arabs (c) Dutch (d) English
2. Which among the following succeeded in controlling the trade with India-
(a) French (b) Arabs (c) Dutch (d) English
3. The English traded through which company in India-
(a) North India Company (b) West India Company
(c) East India Company (d) None of the above
4. Who adopted the policy of divide and rule? (A) French (B) Arabs (C) Dutch (D) English
(a) French (b) Arabs (c) Dutch (d) English
5. Where did the East India Company opened its first trading centre-
(a) Kolkata (b) Delhi (c) Kochi (d) Surat
6. The revolt of 1857 Started among Indian soldiers at-
(a) Delhi (b) Meerut (c) Allahabad (d) Kolkata
7. The revolt of 1857 was spread to all the parts of the country under the leadership of-
(a) Tantia Tope (b) Nana Sahib (c) Rani Laxmibai (d) All of the above
8. The revolt of 1857 Against British rule is known as -
(a) Non-cooperation movement (b) First War of India's independence
(c) Quit India movement (d) none of the above
9. The revolt of 1857 was a failure because of -
(a) Revolt was restricted to a few areas (b) The people were not united
(c) Both a and b (d) none of the above
10. Who was proclaimed the emperor of India during the revolt of 1857-
(a) Bahadur Shah Zafar (b) Shiraj-ud-Daulah
(c) Queen Victoria (d) none of the above

WRITE TRUE OR FALSE AND CORRECT THE FALSE STATEMENT AND REWRITE IT.

- i) The first war of India's Independence is also known as "Sepoy Mutiny." _____
CORRECT- _____
- ii) The INC was formed by W.C. Banerjee.
CORRECT- _____

GIVE REASON:

The farmers were unhappy with the East Indian Company

Ans _____

WRITE ONE WORD FOR THE FOLLOWING:

- i) Armed protest against a ruler. _____
- ii) Love and devotion towards one's country. _____

SOURCE BASED QUESTION:

A Brief History of the Indian National Congress

The Indian National Congress (INC) was founded in 1885 by a retired British officer, Allan Octavian Hume, along with educated Indian leaders. The first session was held in Mumbai and was attended by 72 delegates from different parts of India.

Role in Independence

The Indian National Congress became the leading organization in India's struggle for freedom. Its efforts united people from different regions, religions, and communities. India finally gained independence from British rule on 15 August 1947.

Conclusion

The history of the Indian National Congress reflects the growth of Indian nationalism and the united struggle of Indians for independence. It played a major role in shaping modern India.

Questions-

- i) In which year INC was formed and by whom?

Ans _____

ii) In Which city of India, the first session of INC was held?

Ans _____

iii) What role does INC played in India's Struggle for freedom?

Ans _____

LOOK AT THE PICTURE AND ANSWER THE FOLLOWING QUESTIONS:



i) Identify the Last Mughal Emperor of India.

Ans



ii) Write any one reasons for the failure of revolt of 1857.

Ans

LESSON NO-20

GOVERNMENT OF INDIA

COMPETENCY BASED QUESTION:

1.	Who is the head of the Central Government of India?			
	(a) Governor	(b) Chief Minister	(c) Prime Minister	(d) Mayor
2.	If the government at the centre is known as Union Government, what is the government at the state is known as?			
	(a) State government		(b) Central government	
	(c) District government		(d) Federal government	
3.	India is a _____.			
	(a) Monarchy	(b) Dictatorship	(c) Democracy	(d) Empire
4.	India is called a democracy because:			
	(a) The President makes all decisions.		(b) Citizens elect their representatives through voting.	
	(c) Only government officials can vote		(d) Laws are made by judges.	
5.	Indian Parliament has how many houses?			
	(a) 2	(b) 3	(c) 4	(d) 1
6.	The upper house of the parliament is			
	(a) Lok Sabha	(b) Prime Minister Office	(c) Rajya Sabha	(d) Union
7.	The image shown below is of -			
				
	(a) New Parliament House of India		(b) Parliament of India	
	(c) Rashtrapati Bhavan		(d) Supreme Court of India	
8.	The image shown below is of -			
				
	(a) New Parliament House of India		(b) Parliament of India	
	(c) Rashtrapati Bhavan		(d) Supreme Court of India	
9.	The Supreme Law making body in India is the			
	(a) Parliament of India		(b) Supreme Court of India	
	(c) Upper House		(d) Lower House	
10.	Read the statement and reason and choose the correct option.			
	Statement: India is called a democracy.			
	Reason: People elect their representatives through voting.			
	(a) Statement is right, reason is wrong.		(b) Statement is wrong, reason is right.	
	(c) Both are wrong		(d) Both are right.	
WRITE TRUE OR FALSE AND CORRECT THE FALSE STATEMENT AND REWRITE IT.				
i)	The apex court of India is the High Court. _____			
	CORRECT- _____			
ii)	The Vice President of India is the Chairman of Rajya Sabha. _____			
	CORRECT- _____			
GIVE REASON:				

The Constitution of India provides for federal government.

Ans _____

WRITE ONE WORD FOR THE FOLLOWING:

- i) The Head of the country. _____
- ii) The chairperson of Lok Sabha. _____

LOOK AT THE PICTURE AND ANSWER THE FOLLOWING QUESTIONS.



i) What does the picture show?

Ans _____

ii) This is often called the:

(a) Law Book

(b) Introduction to the Constitution

(c) Court Order

(d) Rule of Parliament

iii) Students from different religions study together in the same school and are treated equally.

Which value of the Preamble does this situation reflect?

(a) Secular

(b) Republic

(c) Justice

(d) Monarchy

READ THE PARAGRAPH AND ANSWER THE FOLLOWING QUESTIONS.

Indian Parliament is bicameral in nature i.e. that it has two houses. Rajya Sabha is one of those two houses, i.e. the upper house of the Parliament. The other house is the Lok Sabha (Lower House of the Parliament.) Rajya Sabha is the upper house of the parliament and is termed as House of Elders in Indian Parliament. Rajya Sabha consists of the representatives of the States and the Union Territories and persons nominated by the President of India. Rajya Sabha Members are elected by the elected members of state legislative assemblies. The Vice-President of India is the official Chairman of Rajya Sabha.

i) What do you mean by- Indian Parliament is bicameral in nature?

Ans _____

ii) In Indian parliament which house is known as “House of Elders”

Ans _____

iii) How are the members of Rajya Sabha elected?

Ans _____

iv) Who is the official chairman of Rajya Sabha?

Ans _____



Delhi Public School, Gandhinagar
Periodic Test- I (2026-27)

Class: III

EVS

Date: 00.00.2026

Time: 1 hour

M. Marks: 20

Name: _____ Sec: _____ Roll No.: _____

General Instructions:

- (i) There are 3 Sections in this paper.
- (ii) All the questions are compulsory.
- (iii) Answer the questions as per the instructions.

SECTION A

I Choose the correct option:

8x1=8

- Q.1. Where does the food come from when the seed has not grown its leaves?
(a) From other trees (b) From air
(c) Seed uses its stored food (in cotyledons) (d) From soil
- Q.2. **In the following question, a statement (S) is followed by a statement of reason (R).**
Statement(S): Seeds are important for the reproduction of most flowering plants.
Reason (R): Seeds contain an embryo that can grow into a new plant.
Mark the correct choice.
(a) Both Statement and reason are true. (b) Both Statement and reason are false.
(c) Statement is false but reason is true. (d) Both are wrong.
- Q.3. Baking of cake is an example of _____.



- (a) Chemical change (b) Reversible change
(c) Irreversible change (d) Both (a) & (c)
- Q.4. Riya leaves her home and walks **100 m North** to a park. Then she turns **right** and walks **50 m** to her school.



- In which direction is the school from the park?
(a) North (b) South (c) East (d) West
- Q.5. Riya fills a balloon with air and presses it gently. She notices that the air inside changes shape but still occupies space.



- What does this experiment show?
(a) Air has no mass. (b) Air occupies space.
(c) Air is a liquid. (d) Air cannot change shape.
- Q.6. Why is seed dispersal important?

- (a) To make seeds heavier (b) To prevent overcrowding of plants
 (c) To stop seed germination (d) To produce flowers
- Q.7. What happens when ice melts?
 (a) Gas changes into liquid (b) Liquid changes into solid
 (c) Solid changes into gas (d) Solid changes into liquid
- Q.8. Which among the following are the language of the map?
 (a) colours (b) signs (c) symbols (d) All of the above

II Computational Thinking Skill Question:

2x1=2

Q.9. Pattern Recognition

A map uses the following symbols:

★ = Capital City ● = City ▲ = Mountain ≈ = River

Question: A student sees the symbol ★ beside New Delhi. What does the symbol ★ represent?

- (a) River (b) Capital city (c) Mountain (d) State
- Q.10. Problem-Solving Question

A map scale shows: **1 cm = 5 km**

The distance between two cities on the map is **4 cm**. What is the actual distance?

- (a) 9km (b) 15km (c) 20km (d) 25km

III Case Study Based Question:

2x1=2

A group of young explorers studies the world's oceans. The Pacific Ocean is the largest. The Atlantic Ocean separates North America and Europe. The Indian Ocean is named after India. The Southern Ocean surrounds Antarctica. The Arctic Ocean is the smallest ocean.

Q.11. Which ocean separates North America and Europe?

Q.12. Which ocean surrounds Antarctica?

SECTION B

Do as directed.

I Give one word:

2x½=1

Q.1. Another name for seed leaves.

Q.2. Process of loosening and turning the soil.

II Identify the process, name it and classify it into chemical or physical change.

2x½=1



SECTION C

Answer the following questions.

3x2=6

Q.1. What is a Map and Atlas?

Q.2. What is radicle and plumule in a seedling (baby plant)?

Q.3. Write the difference between miscible and immiscible liquids.

Statement(s): Rainwater harvesting helps conserve water.

Reason (R): It stores rainwater for future use.

Mark the correct choice.

- a) Both Statement and reason are true. b) Both Statement and reason are true.
c) Statement is false but reason is true. d) Statement is false but reason is true.
- Q.11. Excess cutting of forest leads to
a) Less rainfall b) Destruction of wild life
c) Both a) and b) d) None of the above
- Q.12. What are the causes for the increase in the greenhouse gases in the environment-
a) Burning of fossil fuels b) Smoke from factories and automobiles
c) Deforestation d) All of the above
- Q.13. **Who came first to India for trade-**
a) French b) Dutch c) Arabs d) English
- Q.14. The war initiated in 1757, by the Nawab of Bengal, Siraj-ud-Daulah is known as-
a) Battle of Plassey b) Battle of English
c) Battle of freedom d) Battle of British
- Q.15. The war between the Indian leaders and Britishers known as "First War of India's Independence" started in-
a) 1757 b) 1857 c) 1900 d) 1947
- Q.16. Identify the founder of INC in 1885-



- a) Dadabhai Naoroji b) W.C.Banerjee c) A.O.Hume d) Surendranath
- Q.17. Citizens above 18 years of age vote to choose their representatives.
Question: Why are elections important in a democracy?
a) They help citizens participate in government. b) They allow voters to re-elect if unsatisfied
c) Elected leaders get public support d) All of them
- Q.18. How many members are nominated by the President of India in Rajya Sabha out of 250.
a) 12 b) 13 c) 14 d) 15
- Q.19. Identify the following Building-



- a) Rashtrapati Bhavan b) Parliament of India
c) Supreme Court of India d) New Parliament House of India
- Q.20. The Government consists of which bodies?
a) legislative b) executive c) judiciary d) All the three

II Computational Thinking Skill Question:

5x1=5

Q.21 Sequencing (Algorithm)

Arrange the following steps in the correct order to prevent the spread of communicable diseases:

1. Wash hands with soap.
2. Eat food.
3. Dry hands with a clean towel.
4. Wet hands with water.

- a) 4 → 1 → 3 → 2 b) 1 → 4 → 3 → 2 c) 4 → 3 → 1 → 2 d) 1 → 3 → 4 → 2

Q.22. *Classification*

Group the diseases below into communicable and non-communicable diseases

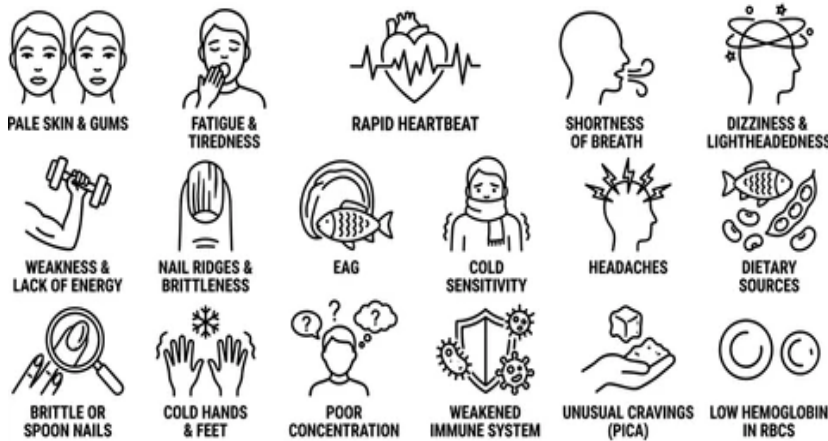
- Malaria
- Diabetes
- Tuberculosis
- Common Cold

Question: Which group contains only communicable diseases?

- a) Malaria, Tuberculosis, Common Cold b) Diabetes, Malaria, Common Cold
 c) Diabetes, Tuberculosis, Common Cold d) Diabetes only

Q.23. *Data Interpretation*

A doctor recorded the number of patients with following symptoms of some non-communicable disease.



Which disease might have affected the patients?

- a) Anaemia b) Hypertension c) Obesity d) Diabetes

Q.24. *Decision Making*



Based on the pictures, which action would help reduce the greenhouse effect the most?

- a) Using more private vehicles b) Cutting down trees
 c) Planting trees and saving energy d) Burning more fossil fuels

Q.25 *Data Interpretation with Picture-* Observe the images showing the effects of global warming.

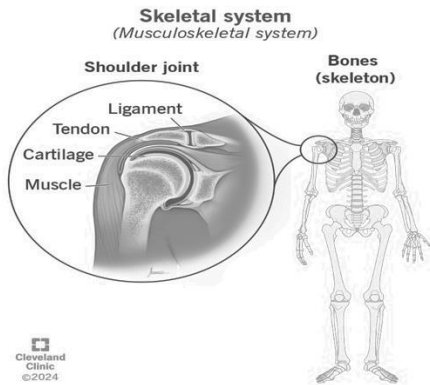


Question: Which of the following is a likely result of an increased greenhouse effect?

- a) Lower global temperatures
- b) Melting glaciers and ice caps
- c) Less heat trapped in the atmosphere
- d) More oxygen in the air

III Case Study Based Question:

5x1=5



The human skeleton is composed of 206 bones grouped into two main parts: the axial skeleton (the skull, vertebral column, and rib cage) that protects vital organs, and the appendicular skeleton (the limbs and girdles) that facilitates movement. Together with connective tissues like cartilage and ligaments, it provides structural support, produces blood cells, and stores minerals. Your skeletal system is made up of-

1. BONES- they are the main structural support.
2. MUSCLES- They are tightly woven, stretchy fibers, 600 in number, help in all type of movement.
3. CARTILAGE- It is strong, flexible tissue that acts like a shock absorber in joints throughout your body.
4. LIGAMENT- They are bands of tissue that connect bones to other bones.
5. TENDONS- They are cords that connect muscles to bones.
6. JOINTS- A joint is any place where two bones meet.

- Q.26. In how many parts our skeletal system is divided?
- Q.27. What does axial skeletal system consist of?
- Q.28. What do you mean by appendicular skeleton?
- Q.29. Which tissue acts as shock absorber?
- Q.30. What is the function of tendons?

Section C

Do as directed

- I Write true or false: 2x1/2=1
 - Q.1. Immunity is the ability to protect oneself from diseases.
 - Q.2. Tuberculosis spread through protozoa.
- II Give one word for the following: 2x1=2
 - Q.1. Connecting ring of bones in the body.
 - Q.2. Existence of different types of plants and animals which makes a balanced environment.
- III Identify the famous personality and document and name them: 2x1=2



a)



b)

Section C

I Answer in short:

3x2=6

- Q.1. What are diseases? Classify them.
- Q.2. Why were the farmers unhappy with the East India Company?
- Q.3. Name the two houses of Indian parliament? Also write their strength.

II Answer in detail:

3x3=9

- Q.1. Explain the Greenhouse effect. Name any two greenhouse gases.
- Q.2. What does the state government include?
- Q.3. What was the reason for the failure of the revolt of 1857?

TERM 2

LESSON NO 9 THE NERVOUS SYSTEM

COMPETENCY BASED QUESTION:

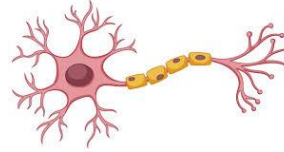
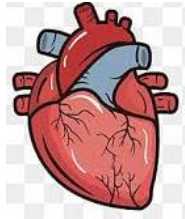
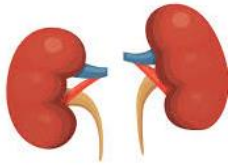
1. Which of the following is also called the human computer?

(a) Kidney

(b) Heart

(c) Nerves

(d) Brain



2. Sensory neurons transmit messages:

(a) From heart to lungs

(b) To brain from spinal cord

(c) from brain to spinal cord

(d) Within the brain

3. Which system transmits that you have a pebble in your shoe?

(a) Digestive system

(b) Circulatory system

(c) Skeletal system

(d) Nervous system

4. Which of the following is NOT a reflex action?

(a) Blinking of eyes

(b) Coughing

(c) Sneezing

(d) Shivering

5. During dance class, which part of brain help you in coordination of hand movements?

(a) Cerebrum

(b) Cerebellum

(c) Medulla

(d) All of them

6. Which type of stimulus is NOT generally detected by our skin?

(a) Heat

(b) Pain

(c) Roughness

(d) Light

7. Abhi accidentally touched a hot metal and spontaneously withdrew his hand from the metal. Why did he react spontaneously?



shutterstock.com · 2012697533

(a) Due to the attraction of the metal

(b) Due to repulsion of the metal

(c) Due to reflex action

(d) Due to the brightness and heaviness of the metal

8. Match the following parts of the brain in Column-I with their functions in Column-II correctly.

	Column 1		Column 2
p)	Cerebrum	i.	Controls breathing and blood circulation
q)	Cerebellum	ii.	Controls movements
r)	Medulla	iii.	Controls speech, memory and intelligence

(a) p-(i) q-(ii) r-(iii)

(b) p-(i) q-(iii) r-(ii)

(c) p-(ii) q-(i) r-(iii)

(d) p-(iii) q-(ii) r-(i)

9. Which organ helps us to keep our body balance?

(a) Nose



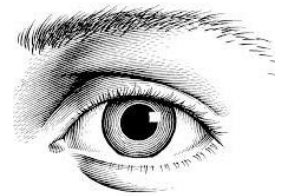
(b) Hand



(c) Ear



(d) Eye



10. Read the statement and reason and choose the correct option.

Statement: Brain is not involved in reflex action.

Reason: Brain is not capable of taking decision.

- (a) Statement is right, reason is wrong.
- (b) Statement is wrong, reason is right.
- (c) Both are right.
- (d) Both are wrong.

WRITE TRUE OR FALSE AND CORRECT THE FALSE STATEMENT AND REWRITE IT.

1. Sensory nerves carry messages from body to brain.

Ans.

2. Human ear is divided into five parts.

Ans.

GIVE REASON: Why do we blink our eyes when someone tries to hit us?

Ans.

WRITE ONE WORD FOR THE FOLLOWING:

1. The nerves that carry messages from the brain to the different parts of the body.

2. The actions controlled by the spinal cord. _____

3. The system that controls all other systems of our body. _____

4. The part of the brain that controls our feelings. _____

CASE BASED QUESTION:

Arjun is playing cricket and hits the ball after carefully watching it.

1. Which organ helps Arjun see the ball?

Ans.

2. Which part of the brain helps him decide when to hit?

Ans.

3. Are nerves involved in moving his hands? How?

Ans.

SOURCE BASED QUESTION:

READ THE PARAGRAPH AND ANSWER THE FOLLOWING QUESTIONS:

The nervous system or the neural system is a complex network of neurons specialized to carry messages. The Nervous System comprises special cells called neurons or nerve cells. In the human body, the neural system integrates the activities of organs based on the stimuli, which the neurons detect and transmit. They transmit messages in the form of electrical impulses and convey messages to and from the sense organs. Thus, the nervous coordination involves the participation of the sense organs, nerves, spinal cord, and brain.

1. Write another name for nervous system?

Ans.

2. What are the cells of nervous system known as?

Ans.

3. In which form the messages are transmitted?

Ans.

EXPERIMENT BASED QUESTION:

Take salt, sugar, lemon juice, green chili, taste it through different parts of your tongue and write your observation.

Diagram:

Observation:

COMPUTATIONAL THINKING SKILL QUESTION

Sequencing (Order the Steps)

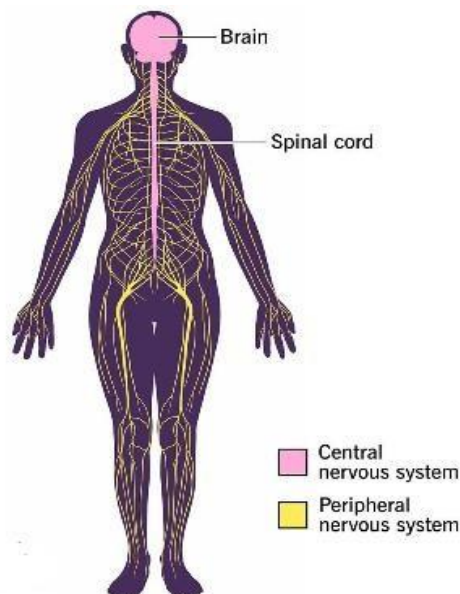
When you touch a hot object, your body reacts quickly.

Arrange the steps in the correct order:

- (a) Brain sends message to hand
- (b) Skin senses heat
- (c) Hand moves away
- (d) Message travels to brain

Ans.

SEE THE DIAGRAM AND ANSWER THE FOLLOWING QUESTIONS:



1. What does the nervous system consist of?

Ans.

2. What is the control centre of the body?

Ans.

3. Name the different kinds of nerves in our body.

Ans.

LESSON NO-10

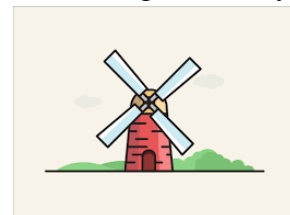
FORCE, ENERGY AND SIMPLE MACHINES

COMPETENCY BASED QUESTIONS:

- Why do we apply force?
(a) To move an object. (b) To stop a moving object.
(c) To change the shape of an object. (d) All of these.
- In which of the following cases, contact force is working?
(a) A fruit falling on the ground. (b) A ball stopped by a fielder.
(c) A magnet attracting iron nails. (d) All of these.
- Which of the following will experience the least amount of friction?
(a) A boy skiing on ice. (b) A boy walking on a road.
(c) A boy writing on a chart paper. (d) A boy playing football on a grassy field.
- Which force will you use to lift a heavy bag on your shoulder?
(a) Muscular force (b) Magnetic force (c) Frictional force (d) Gravitational force
- Which of the following is an example of disadvantage of frictional force?
(a) Writing with pencil on a paper. (b) Wear and tear of machine parts.
(c) Walking on a ground. (d) Lighting a match stick.
- In which of the following will you say that work is done?
(a) Watching TV (b) Smelling a flower
(c) Pushing wall of your house with hands. (d) Kicking a football.
- Which of the following will have the highest potential energy?
(a) A 50 g ball kept 50 m above the ground.
(b) A 50 g ball kept 500 m above the ground.
(c) A 5 g feather kept 50 m above the ground.
(d) A 50 g ball kept 100 m above the ground.
- Which of the following will have the maximum kinetic energy?
(a) A car running at the speed of 80 km/hr.
(b) A car running at the speed of 70 km/hr.
(c) A car running at the speed of 100 km/hr.
(d) A car running at the speed of 120 km/hr.
- Which of the following needs wind energy?
(a) Sailing boat. (b) Generating electricity.



(c) Drying clothes.



(d) All of these.

- What is true about fulcrum?
(a) It is the point on which the bar moves.
(b) It is the object on which work is being done.

(c) It is the applied force.

(d) All of these.

WRITE TRUE OR FALSE AND CORRECT THE FALSE STATEMENT AND REWRITE IT CORRECTLY.

1. In first class lever, load is located in the centre.

Ans.

2. Muscular force is a contact force.

Ans.

GIVE REASON: Rahul was pushing the wall of his room with full force but still his father said work is not done. Why?

Ans.

GIVE ONE WORD FOR THE FOLLOWING:

1. Ability to do work _____

2. Source of energy that can be renewed _____

3. A simple machine that consists of a bar that rests on a support or at a fixed point _____

CASE BASED QUESTION:

Rajan wants to load a heavy box into a truck. He uses a wooden plank to push the box up instead of lifting it directly.

1. Which simple machine is Rajan using?

Ans.

2. How does this machine make work easier?

Ans.

3. Give one more example of this type of machine.

Ans.

SOURCE BASED QUESTION:

READ THE PARAGRAPH AND ANSWER THE FOLLOWING QUESTIONS.

Renewable energy is energy derived from natural sources that are replenished at a higher rate than they are consumed. Sunlight and wind, for example, are such sources that are constantly being replenished. Renewable energy sources are plentiful and all around us.

Fossil fuels - coal, oil and gas - on the other hand, are non-renewable resources that take hundreds of millions of years to form. Fossil fuels, when burned to produce energy, cause harmful greenhouse gas emissions, such as carbon dioxide.

Generating renewable energy creates far lower emissions than burning fossil fuels. Transitioning from fossil fuels, which currently account for the lion's share of emissions, to renewable energy is key to addressing the climate crisis.

Renewables are now cheaper in most countries, and generate three times more jobs than fossil fuels.

1. Name two sources of renewable energy. _____

2. Name two non-renewable sources of energy. _____

3. Why is use of renewable source of energy good?

Ans.

EXPERIMENT BASED QUESTION:

Place two metal objects—one in sunlight and one in shade—for 10 minutes.

Which object feels warmer? What does this tell you about the Sun as a source of energy?

Diagram:

Ans.

COMPUTATIONAL THINKING SKILL QUESTION

Sequencing (Order the Steps)

A boy kicks a football.

Arrange the steps correctly:

- (a) Ball moves forward
- (b) Foot applies force
- (c) Energy is transferred to the ball
- (d) Ball gains motion

Ans.

LOOK AT THE PICTURE AND ANSWER THE FOLLOWING QUESTIONS:

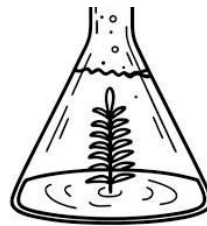


1. Which class lever is shown here? _____
2. Give one more example of this class of lever. _____
3. In case, load is shifted in the centre, it will turn into which class lever?

LESSON NO 11
AIR AND WATER

COMPETENCY BASED QUESTION:

1. Which of the following activities will not need air?
(a) Breathing (b) Burning
(c) Sailing boat (d) Looking at Moon
2. Which property of air is shown here?
(a) Air is needed for burning. (b) Air has mass.
(c) Air exerts pressure. (d) Hot air expands.
3. Which of the following statements is not true regarding air?
(a) Air is made up of molecules. (b) Molecules in air has strong force of attraction.
(c) Air expands on heating. (d) Air has no shape.
4. Air pressure is not useful in
(a) Drinking juice using straw. (b) Inflating balloon.
(c) Proper functioning of tyres in bicycle (d) Writing in notebook.
5. Rita was describing the properties of one of the layers of atmosphere. She said this layer extends up to 15 km and weather changes take place here. She's talking about which layer?
(a) Troposphere (b) Stratosphere (c) Mesosphere (d) Exosphere
6. Riya added sand to water and stirred it. After some time, sand settled at the bottom.
What does this show about sand?
(a) It dissolves in water (b) It is a soluble impurity
(c) It is an insoluble impurity (d) It disappears in water
7. Rahul sees small leaves floating in water taken from a pond. Which method should he use first to remove the leaves?



8. Water from a river is stored in a bucket and left undisturbed.
What will happen after some time?
(a) Salt will settle (b) Sand will settle
(c) Water will disappear (d) Germs will become visible
9. **Assertion-Reason**
Assertion (A): Distillation can give pure water.
Reason (R): Water vapour becomes liquid on cooling.
Choose the correct option.
(a) Both A and R are true and R explains A
(b) Both A and R are true but R does not explain A
(c) A is true, R is false
(d) A is false, R is true
10. A mixture contains sand and salt dissolved in water.
Which sequence will give pure water?
(a) Filtration → Distillation (b) Distillation → Filtration
(c) Sedimentation only (d) Evaporation only

WRITE TRUE OR FALSE AND CORRECT THE FALSE STATEMENT AND REWRITE IT CORRECTLY.

1. Thermosphere is the last and the thinnest layer of the atmosphere.

Ans.

2. Distilled water is the purest water.

Ans.

GIVE REASON: Why is chlorine added to water?

Ans.

WRITE ONE WORD FOR THE FOLLOWING:

1. A thin blanket of air that surrounds the earth. _____
2. Substances that make the water impure. _____
3. Removing light insoluble impurities from a liquid by passing it through a filter.
_____.

CASE BASED QUESTION:

Salt in Water

Aman added salt to a glass of water and stirred it well. After some time, the salt was no longer visible.

1. What type of impurity is salt? _____
2. Why can we not see salt in water after stirring?

Ans.

3. Can sedimentation remove salt from water? Why?

Ans.

4. Name one method to separate salt from water.

Ans.

SOURCE BASED QUESTION:

Air is a mixture of different gases that surrounds the Earth and forms the atmosphere. It mainly contains nitrogen, oxygen, carbon dioxide, and small amounts of other gases. Oxygen in the air is essential for breathing and burning, while carbon dioxide is used by plants to prepare their food through photosynthesis. Air also contains water vapour and dust particles. These particles help in the formation of clouds and rain. Moving air is called wind, which can be useful for generating electricity and for activities like sailing and flying kites. Clean air is necessary for good health, but pollution makes air dirty and harmful for living beings.

1. What is air made up of?

2. Why are dust particles in air important?

3. What can be a harmful effect of polluted air?

4. Oxygen is used by plants to make food. (true or false) _____

Experiment Based Question:**Cleaning Muddy Water**

A student takes muddy water in a beaker. First, she leaves it undisturbed for some time. Then she carefully pours the clear water into another container and finally filters it using a cloth.

Diagram:

Complete the observation table.

Step no	Process used	What was done	Observation
1			
2			
3			

COMPUTATIONAL THINKING SKILL QUESTION**Debugging (Find the Error)**

If student writes:

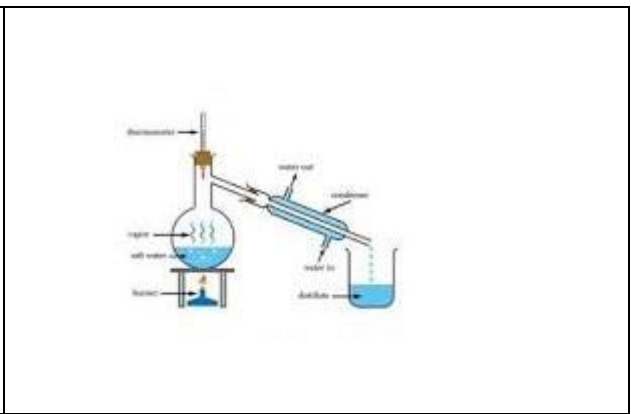
Filtration → Sedimentation → Decantation

What is wrong? (Tick the correct option)

- (a) Filtration should be last
- (b) Sedimentation should be first
- (c) Decantation should be first
- (d) No error

LOOK AT THE DIAGRAM AND ANSWER THE FOLLOWING QUESTIONS:

Identify and name the process.



LESSON NO 12
NATURAL CALAMITIES

COMPETENCY BASED QUESTIONS:

1. Which of the following is not a natural calamity?
(a) Volcanic eruption (b) Bomb blast (c) Earthquake (d) Tsunami
2. What are natural calamities?
(a) Sudden and violent happenings that causes massive destruction.
(b) An event in nature that can be controlled by humans.
(c) Sudden attack of terrorist.
(d) Violent happenings caused by humans.
3. What causes earthquake?
(a) Movement inside the Earth's core.
(b) Movement in the mantle.
(c) Movement inside the Earth's crust.
(d) Sudden formation of clouds.
4. What is true about focus and epicentre?
(a) The point where rocks start to crack is called focus.
(b) The point where rocks start to crack is called epicentre.
(c) The surface above the focus is epicentre.
(d) Both a and c.
5. Which instrument is used to measure an earthquake?
(a) Thermometer (b) Seismograph (c) Odometer (d) Speedometer
6. What is common between Mount Fuji, Mount Erebus, Mount Vesuvius?
(a) They are dormant volcanoes.
(b) They are extinct volcanoes.
(c) They are active volcanoes.
(d) They are sometimes dormant and sometimes active.
7. If you are in Japan, you will call Tsunami as
(a) Tidal waves (b) Sea waves (c) Harbour waves (d) Huge waves
8. Which of the following is an example of extinct volcano?
(a) Mt Kilimanjaro (b) Narcondam (c) Mount Fuji (d) Zuidwal
9. Floods: heavy rain fall, drought:?
(a) No rainfall (b) Rainfall below average (c) Both a and b (d) None of these.
10. Which of the following are not the result of drought?
(a) Increase in crop price. (b) Loss of life.
(c) Scarcity of food (d) Floods
11. **Assertion (A):** Earthquakes can cause buildings to collapse.
Reason (R): Earthquakes shake the ground.
Choose the correct option:
(a) Both A and R are true and R explains A
(b) Both A and R are true but R does not explain A
(c) A is true, R is false
(d) A is false, R is true

WRITE TRUE OR FALSE AND CORRECT THE FALSE STATEMENT AND REWRITE IT CORRECTLY.

1. Flood is caused due to excessive rain fall.

Ans.

2. Mount Fuji is an extinct volcano.

Ans.

GIVE REASON: Why are tidal waves caused?

Ans.

WRITE ONE WORD FOR THE FOLLOWING:

1. The point where the earthquake starts _____
2. A mass slide of snow or ice _____
3. Destructive ocean waves caused by earthquake _____

CASE BASED QUESTION:

Japan is a country where earthquakes occur frequently. It is located in a region called the “Ring of Fire,” where several tectonic plates meet. Because of this, the land often shakes, causing earthquakes. To stay safe, people in Japan build strong buildings that can withstand shaking. They also practice safety drills regularly so that they know what to do during an earthquake.

1. Why does Japan experience frequent earthquakes?

Ans.

2. What is the “Ring of Fire”?

Ans.

3. How do people in Japan reduce damage from earthquakes?

Ans.

SOURCE BASED QUESTIONS:

READ THE PARAGRAPH AND ANSWER THE FOLLOWING QUESTIONS:

Avalanches are like landslides. But instead of rocks thousand tons of snow falls down the slope. Moreover, this causes extreme damage to anything that comes in its way. People who live in snowy mountains always have fear of it.

Causes: Avalanches takes places when there is a large accumulation of snow on the mountains. Moreover, they can also occur from earthquakes and volcanic eruptions. Furthermore, the chances of surviving an avalanche are very less. This is because people die of hypothermia in it.

1. What is the difference between landslide and avalanches?

Ans.

2. People of which region have the fear of avalanches?

Ans.

3. Write any one cause of avalanches.

Ans.

COMPUTATIONAL THINKING SKILL QUESTION

Data Interpretation

Situation	Result
High pressure	Eruption likely
Low pressure	No eruption
Magma rises	Pressure increases

What can you conclude? (tick the correct option)

- (a) Pressure is not important
- (b) High pressure leads to eruption
- (c) Magma stops eruption
- (d) Eruption reduces pressure only

LOOK AT THE PICTURE AND ANSWER THE FOLLOWING QUESTIONS:



1. Which natural disaster is shown here? _____
2. Which instrument is used to measure it? _____
3. Write any two effects of it.

Ans.

WRITE TRUE OR FALSE AND CORRECT THE FALSE STATEMENT AND REWRITE IT CORRECTLY.

1. Solar eclipse occurs when Earth comes between the moon and the sun.

Ans.

2. Aryabhata was India's first satellite launched in 1975.

Ans.

GIVE REASON: Neil Armstrong could not hear the sound of Michael Collins on Moon. Why?

Ans.

WRITE ONE WORD FOR THE FOLLOWING:

1. Piece of rock from the outer space. _____
2. A small object that revolves around the planet. _____
3. the natural phenomena in which the Earth casts its shadow on the Moon.

CASE BASED QUESTION:

During a science exhibition, a student used a torch (Sun), a ball (Earth), and a smaller ball (Moon). He showed two situations:

- In one, the Moon blocked light falling on Earth.
- In another, Earth blocked light reaching the Moon.

1. Identify the two events shown in the model. _____
2. Which event occurs during the day? _____
3. Why don't eclipses happen every month?

Ans.

4. Which eclipse is safer to watch with the naked eye? _____

SOURCE BASED QUESTION:

READ THE PARAGRAPH AND ANSWER THE FOLLOWING QUESTIONS.

The Moon does not have a proper atmosphere like the Earth. An atmosphere is a layer of gases that surrounds a planet and helps to trap heat and protect life. Since the Moon has very weak gravity, it cannot hold gases around it. Because of this, there is no air to breathe, no wind, and no weather on the Moon. The sky on the Moon always looks black, even during the daytime. Also, without an atmosphere, the Moon experiences extreme temperatures—very hot during the day and very cold at night. Sound cannot travel on the Moon because there is no air. This is why astronauts use special suits and communication devices when they visit the Moon.

1. Why does the Moon not have a proper atmosphere?

Ans.

2. What are two effects of the absence of atmosphere on the Moon?

Ans.

3. Why does the sky appear black on the Moon?

Ans.

EXPERIMENT BASED QUESTION:**"Eclipses in a Box"**

Objective: To demonstrate how the position of the Moon creates a Solar or Lunar eclipse.

Materials Needed

- A large flashlight (representing the **Sun**)
- A large ball like a basketball (representing the **Earth**)
- A small ball like a golf ball or tennis ball (representing the **Moon**)
- A dark room

Procedure

1. **Solar Eclipse Setup:** Place the "Sun" (flashlight) at one end. Hold the "Moon" (small ball) directly between the Sun and the "Earth" (large ball).

Observation: Look for the small shadow falling on the Earth.

2. **Lunar Eclipse Setup:** Place the "Earth" (large ball) directly between the Sun and the "Moon" (small ball).

Observation: Watch how the Earth's shadow completely covers the Moon.

Diagram:

Section Complete the Table: Based on your experiment, fill in the missing positions:

Type of Eclipse	Position 1 (Light Source)	Position 2 (Middle)	Position 3 (Target)
Solar Eclipse	Sun	?	Earth
Lunar Eclipse	Sun	Earth	?

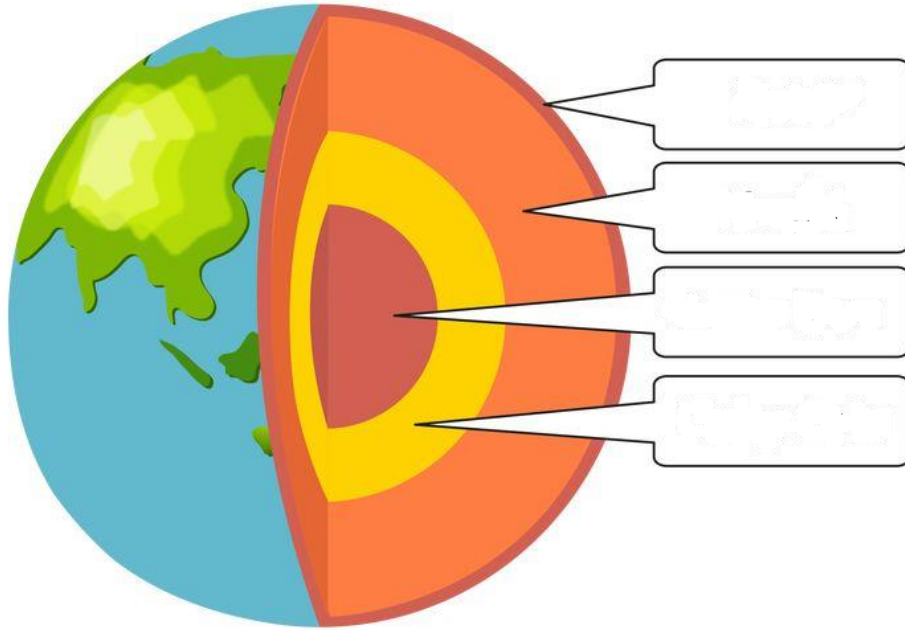
COMPUTATIONAL THINKING SKILL QUESTION

Multi-step Thinking

Choose the correct sequence for a lunar eclipse:

- (a) Sun → Earth → Moon → Shadow on Moon
- (b) Sun → Moon → Earth → Shadow on Earth
- (c) Moon → Sun → Earth → Shadow
- (d) Earth → Sun → Moon → Shadow

LOOK AT THE PICTURE AND ANSWER THE FOLLOWING QUESTIONS:



1. Label the diagram.
2. Which layer is the hot ball of iron? _____
3. What is outer mantle made up of? _____

SOCIAL STUDIES

LESSON NO 2

LATITUDES AND LONGITUDES

COMPETENCY BASED QUESTION:

- Imaginary lines drawn on a globe that run from east to west are called
(a) Longitude (b) Latitude (c) North pole (d) Axis
- The longest latitude divides Earth into _____ equal parts.
(a) 1 (b) 2 (c) 3 (d) 4
- The longest line of latitude is
(a) Tropic of Cancer (b) Equator
(c) Antarctic circle (d) Tropic of Capricorn
- Choose the correct match.

(a) Column A	(b) Column B
(c) Tropic of Cancer	(d) 23 ½° S
(e) Tropic of Capricorn	(f) 66 ½° N
(g) Arctic Circle	(h) 66 ½° S
(i) Antarctic Circle	(j) 23 ½° N

 - i. b, ii. a, iii. c, iv. d
 - i. c, ii. a, iii. b, iv. d
 - i. d, ii. c, iii. b, iv. a
 - i. d, ii. a, iii. b, iv. c
- The meridian which passes through _____ is called Prime Meridian.
(a) Greenwich (b) Bhutan (c) London (d) New York City
- How many meridians are there?
(a) 300 (b) 460 (c) 360 (d) 180
- What is the difference between Prime Meridian and the meridian passing through India?
(a) 50° (b) 60° (c) 70° (d) 80°
- India lies towards which meridian?
(a) North (b) East (c) West (d) South
- Which of the following statements are true?
 - Equator divides Earth into two equal halves.
 - All meridians are equal in length.
 - Latitudes are parallel to each other.
 - All of the above
- To locate places on the globe, you must know
(a) Values of its parallel.
(b) Values of its meridian.
(c) Point of intersection of latitude and longitude.
(d) All of the above.

GIVE ONE WORD

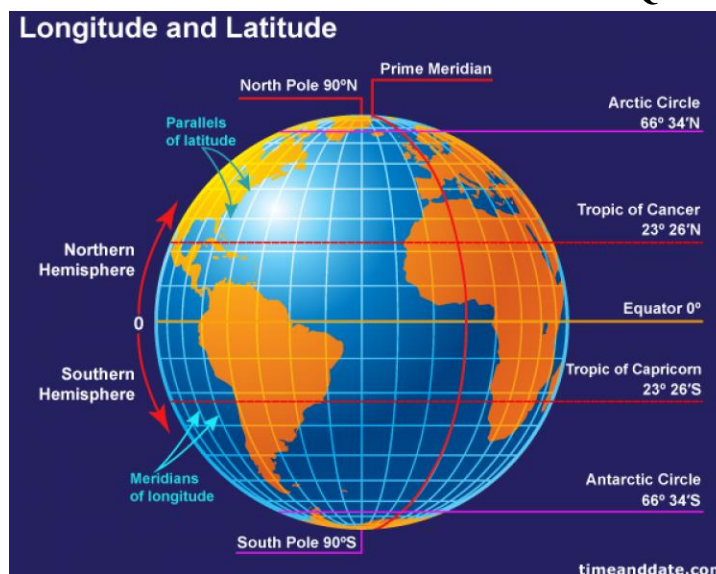
- An imaginary line, passing through two extreme points on a sphere _____
- Either of the end points at the top or bottom of the Earth's axis _____
- Parallel lines running on the globe from east to west _____

WRITE TRUE OR FALSE

- An imaginary line passing through two extreme points on a sphere is called grid.

2. Tropic of Cancer in the northern hemisphere is designated with 23 ½ degree N latitude.
3. All meridians are equal in size.

LOOK AT THE PICTURE AND ANSWER THE FOLLOWING QUESTIONS.



1. What is the exact location of North Pole? _____
2. Name the latitude present at 23 ° 26’ N. _____
3. Prime Meridian runs from _____ to _____.

READ THE PARAGRAPH AND ANSWER THE FOLLOWING QUESTIONS.

Latitude and longitude, in **cartography**, a **coordinate system** used to determine and describe the position of any place on **Earth**'s surface. Latitude is a measurement of a location north or south of the **Equator**. In contrast, longitude is a measurement of location east or west of the **prime meridian** at **Greenwich** (an imaginary north-south line that passes through both geographic poles and **Greenwich, London, England, U.K.**). Latitude and longitude together can describe the exact location of any place on Earth. Lines of latitude (also called parallels) are imaginary lines that circle Earth's surface, running east and west **parallel** to the Equator. Lines of longitude (also called meridians) run between the geographic **North Pole** and the geographic **South Pole** and are used to measure distances from the prime **meridian**. Both latitude and longitude are measured in degrees (°), which may be broken down into smaller units called minutes (') and seconds ("). (Or they may be expressed in decimal degrees; negative values of decimal degrees represent latitudes in the Southern Hemisphere and longitudes in the Western Hemisphere.) The latitudes of the North Pole and South Pole are 90° north (N) and 90° south (S), respectively. Lines of latitude north of the Equator (the line that marks 0° latitude) are numbered from 1° to 89° N, and those south of the Equator are numbered from 1° to 89° S. Lines of longitude east of the prime **meridian** (the line that marks 0° longitude) are numbered from 1° to 179° east (E). Lines of longitude west of the prime meridian are numbered from 1° to 179° west (W). The 180th meridian, or 180°—which can be drawn north-south from pole to pole across the middle of the **Pacific Ocean**—is the line of longitude exactly opposite the prime meridian.

1. What is the use of latitude and longitude?
- Ans.** _____

2. Write any one difference between latitude and longitude.

Latitude	Longitude

3. Which line divides Earth into two equal halves? _____

LESSON NO 19
INDIA ACHIEVES FREEDOM

COMPETENCY BASED QUESTION:

1. What is the full form of INC?
(a) Indira National Congress (b) Indian National Congress
(c) Institute National Congress (d) Independent National Congress
2. Who out of the following was not the part of moderates?
(a) Gopal Krishn Gokhle (b) Bhagat Singh (c) W. C. Banerjee (d) Dadabhai Naroji
3. What was Rowlatt Act of 1919?
(a) Nobody can be arrested without trial.
(b) Anybody can be arrested after trial.
(c) Anybody can be arrested without trial.
(d) Nobody can be arrested.
4. Freedom fighters who were in favour of strikes and boycotts, were called
(a) Extremists (b) Moderates (c) Combination (d) None of these.
5. Who said “*Swaraj is my birthright, and I shall have it*”.
(a) Bipin Chandra Pal (b) Lala Lajpat Rai
(c) Bal Gangadhar Tilak (d) Mahatma Gandhi
6. Which of the following newspapers was published by Bal Gangadhar Tilak?
(a) Kesari (b) The Hindustan (c) The Times of India (d) The Indian Express
7. Who issued the order of dividing the province of Bengal into two parts?
(a) Lord Curzon (b) Lord Mountbatten
(c) Lord Wavell (d) Lord Linlithgow
8. When was the Swadeshi and Boycott Movement launched?
(a) After the division of Bengal.
(b) After the establishment of East India Company.
(c) After Jallianwala Bagh Massacre.
(d) None of these.
9. What was the motive behind the division of the Province of Bengal?
(a) Prevent the growth of nationalism among Bengalis.
(b) To give equal treatment to all.
(c) To give freedom.
(d) None of these.
10. In which year, the first world war broke?
(a) 1940 (b) 1914 (c) 1941 (d) 1841

GIVE ONE WORD

1. People who believed that the British rulers should be treated in the same way, in which they treated the Indians. _____
2. Movement that believed in “of one’s own country” _____
3. People who believed in strikes and boycotts. _____

WRITE TRUE OR FALSE

1. Non-Cooperation Movement was launched by Neta Subhash Chandra Bose
2. Jallianwala Bagh Massacre happened in 1819.
3. Slogan “Do or Die” was the part of Civil Disobedience Movement.

LOOK AT THE PICTURE AND ANSWER THE FOLLOWING QUESTIONS.



1. Which historical event is shown in this picture? _____
2. On which date, did this take place? _____
3. Name the general who ordered his soldiers to fire at the crowd. _____

READ THE PARAGRAPH AND ANSWER THE FOLLOWING QUESTIONS.

In November 1927, the British government appointed the Simon Commission two years ahead of schedule. The commission was strongly opposed by the [Muslim League](#) and the [Indian National Congress](#), and prominent Indian leaders including [Nehru](#), [Gandhi](#), and [Jinnah](#), because it contained only British members and no Indians. However, it was supported by [Dr. B. R. Ambedkar](#), [Periyar E. V. Ramasamy](#) and Chaudhary Chhotu Ram.^[3]

Prominent Indian nationalist [Lala Lajpat Rai](#) led a protest against the commission in [Lahore](#). He suffered a brutal police beating during the protest and died of his injuries eighteen days later on 17 November 1928.

The [Government of India Act 1919](#) had introduced the system of [diarchy](#) to govern the provinces of [British India](#). Indian opinion clamored for revision of this form of government, and the Government of India Act 1919 stated that a commission would be appointed after ten years to investigate the progress of the government scheme and suggest new steps for reform.

1. In which year Simon Commission was appointed? _____
2. Name two groups that opposed Simon commission.

Ans.

3. What was the reason behind boycotting the Simon Commission?

Ans.

LESSON NO 21
THE UNITED NATIONS AND WORLD PEACE

COMPETENCY BASED QUESTION:

1. What is the aim of United Nation?
 - (a) Facilitate cooperation among the nation.
 - (b) Achieving world peace.
 - (c) Both a and b.
 - (d) None of these.
2. When is United Nations Day is observed?
 - (a) October 24
 - (b) November 24
 - (c) January 24
 - (d) December 24
3. How many member countries are there in United Nations?
 - (a) 193
 - (b) 150
 - (c) 290
 - (d) 190
4. Which situation persuaded the countries to form United Nations?
 - (a) Loss of life during World War I.
 - (b) Massive destruction and loss of life during World War II
 - (c) Ruined economy of many countries during World War II.
 - (d) Both b and c.
5. What are the objectives of United Nations?
 - (a) Maintain peace through the world.
 - (b) Develop friendly relationship between nations.
 - (c) Work together to help people.
 - (d) All of the above.
6. Which of the following is not the principle of United Nations?
 - (a) All member countries have sovereign inequality.
 - (b) All member countries must obey the charter.
 - (c) Countries must try to settle their differences by peaceful means.
 - (d) Countries should cooperate with United Nations.
7. Which country can become the member of United Nations?
 - (a) A country with more population of men than women.
 - (b) A country having very less population.
 - (c) Any rich country.
 - (d) A country committed to peace and accepts the goals of UN charter.
8. Which of the following is not a UN Agency?
 - (a) Food and Agriculture Organisation.
 - (b) United Nations Children’s Fund
 - (c) World Health Organization
 - (d) Animal Welfare Association
9. Identify the logo shown below.



- (a) UNESCO (b) UNICEF (c) WORLD BANK (d) WHO

10. Each country can send _____ members but each country has _____ vote.

GIVE ONE WORD.

1. The document describing the formation and functioning of an organization.

2. Reduction or abolition of arms _____
3. Member since the creation of an organization _____

WRITE TRUE OR FALSE

1. India is one of the permanent members of UN.
2. CRY is a UN agency.
3. UN also takes care of international judicial matters.

LOOK AT THE PICTURE AND ANSWER THE FOLLOWING QUESTIONS.

1. Identify this hall. _____
2. Security Council has how many members? _____
3. Where is this hall situated? _____

READ THE PARAGRAPH AND ANSWER THE FOLLOWING QUESTIONS.

Four months after the San Francisco Conference ended, the United Nations officially began, on 24 October 1945, when it came into existence after its Charter had been ratified by China, France, the Soviet Union, the United Kingdom, the United States and by a majority of other signatories. Now, more than 75 years later, the United Nations is still working to maintain international peace and security, give humanitarian assistance to those in need, protect human rights, and uphold international law.

At the same time, the United Nations is doing new work not envisioned for it in 1945 by its founders. The United Nations has set sustainable development goals for 2030, in order to achieve a better and more sustainable future for us all. UN Member States have also agreed to climate action to limit global warming.

With many achievements now in its past, the United Nations is looking to the future, to new achievements.

1. When did United Nations officially came into existence? _____
2. Why UN has set sustainable development goals?

Ans.

3. Name any two permanent member countries of UN. _____



Delhi Public School, Gandhinagar
Periodic Test- II (2026-27)

Class: V

EVS

Date: 00/01/2027

Time: 1 hour

M. Marks: 20

Name: _____ Sec: _____ Roll No: _____

General Instructions:

- (i) There are 3 Sections in this paper.
- (ii) All the questions are compulsory.
- (iii) Answer the questions as per the instructions.

SECTION A

I. Choose the correct option:

8x1=8

Q.1. Which of the following is not the effect of force?

- (a) Change in speed of an object.
- (b) Change in colour of an object.
- (c) Change in direction of a moving object.
- (d) Change in shape of an object.

Q.2. Identify the given picture.



- (a) Solar panel
- (b) Wind mill
- (c) Dam
- (d) Seesaw

Q.3. In the following question, a statement (S) is followed by a statement of reason (R).

Statement(S): Lala Lajpat Rai was an extremist.

Reason(R): He did not believe in boycotts.

Mark the correct choice.

- (a) Both Statement and Reason are true.
- (b) Both Statement and Reason are false.
- (c) Statement is false but Reason is true.
- (d) Both are wrong.

Q.4. Riya kicks a ball. What effect will it create?

- (a) Ball will move.
- (b) Ball will hit back
- (c) Ball will have no
- (d) None of these.

- Q.5.** Which layer of atmosphere is closest to the earth?
 (a) Stratosphere (b) Troposphere (c) Exosphere (d) Thermosphere
- Q.6.** Which method will be used to kill bacteria in water?
 (a) Filtration (b) Sedimentation (c) Decantation (d) Chlorination
- Q.7.** If a person goes above stratosphere, which harmful rays of the Sun will be present there, which does not reach the Earth?
 (a) Infrared rays (b) Ultra violet rays (c) X-rays (d) Gama rays
- Q.8.** Who was the publisher of the newspaper Kesari?
 (a) Bipin Chandra Pal (b) Gopal Krishna Gokhale
 (c) Bal Gangadhar Tilak (d) W. C. Banerjee

II Computational Thinking Skill Question:

2x1=2

Q.9. Sequencing (Order the Steps)

A torch is switched on.

1. Bulb glows
2. Battery provides energy
3. Electric current flows
4. Switch is pressed

- (a) 4 → 2 → 3 → 1
 (b) 2 → 4 → 1 → 3
 (c) 1 → 2 → 3 → 4
 (d) 3 → 2 → 4 → 1

Q.10. Pattern Recognition

Complete the pattern:

Sun → Solar Energy

Wind → Wind Energy

Water → _____ Energy

- (a) Heat
 (b) Electrical
 (c) Hydel
 (d) Sound

III Case Study Based Question:

2x1=2

India was ruled by the British for many years. The people of India wanted freedom and started a long struggle against British rule. Many brave leaders like Mahatma Gandhi, Jawaharlal Nehru, and Subhas Chandra Bose played important roles in the freedom movement. They encouraged people to fight peacefully and unite against injustice. After many years of struggle and sacrifice, India finally became free on Independence Day. This day is celebrated every year with great pride across the country.

- Q.11.** Who ruled India before independence?
- Q.12.** What was the main aim of the freedom struggle?

SECTION B

Do as directed.

I Give one word:

2x¹/₂=1

- Q.1.** Ability to do work.

Q.2. A thin blanket of air that surrounds the earth.

II Identify the process and label A:

2x¹/₂=1



SECTION C

Answer the following questions:

3x2=6

- Q.1. Write the difference between boiling and filtration.
- Q.2. Why is renewable source of energy more beneficial?
- Q.3. What was the purpose of Swadeshi and Boycott Movement?



Delhi Public School, Gandhinagar
Annual Examination (2026-27)

Class: V

Environmental Science

Date: /03/2027

Time: 2 hours

M. Marks: 50

Name: _____ Sec: _____ Roll No.: _____

General Instructions:

- (i) There are 3 Sections in this paper.
- (ii) All the questions are compulsory.
- (iii) Answer the questions as per the instructions.

SECTION A

Competency Based Question-

I. Choose the correct option: 20x1=20

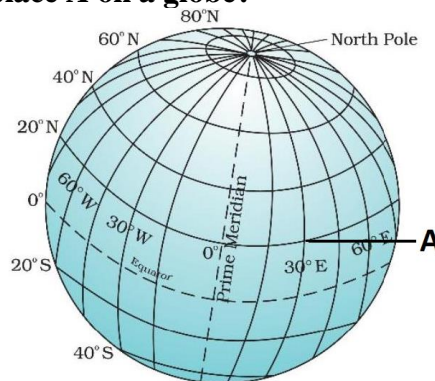
Q.1. If you are standing at Tropic of Cancer and you have to go to Tropic of Capricorn, you will move in which direction?

- (a) Towards north
- (b) Towards east
- (c) Towards south
- (d) Towards west

Q.2. Which of the following is a dormant volcano?

- (a) Mount Kilimanjaro
- (b) Mount Fuji
- (c) Mount Vasuvius
- (d) Zuidwal Volcano

Q.3. What is the location of place A on a globe?



- (a) 20° E 30° W
- (b) 20° N 30° E
- (c) 20° N 30° W
- (d) 30° N 20° E

Q.4. Mansi was travelling in one of the Asian countries. There she heard people using the word 'harbour waves'. Mansi is travelling which country?

- (a) China
- (b) Malaysia
- (c) Bhutan
- (d) Japan

Q.5. In which of the following cases International Court of Justice is not involved?

- (a) Dispute between two countries.
- (b) Internal disputes of a country.
- (c) Both a and b
- (d) None of them.

Q.6. Which of the following is not the permanent member of UN?

- (a) China
- (b) India
- (c) France
- (d) America

Q.7. Which of the following is not a rocky planet?

- (a) Earth (b) Mercury (c) Venus (d) Saturn

Q.8. Which of the following shows the correct match?

Column A	Column B
i. Crust	a. 60-2890 km
ii. Mantle	b. 5150-6360 km
iii. Outer core	c. 0-80 km
iv. Inner core	d. 2890-5150 km

- (a) i-c, ii-a, iii-d, iv-b (b) i-a, ii-c, iii-d, iv-b
 (c) i-b, ii-a, iii-d, iv-c (d) i-d, ii-a, iii-c, iv-b

Q.9. Identify the part of eye based on the features given below:

- It is a tissue that lies behind the cornea.
- It imparts light to the eye.
- It controls the amount of light entering our eye.

- (a) Lens (b) Ciliary muscle
 (c) Iris (d) Retina

Q.10. Which nerve took message from eye to brain when Siddharth saw a rose?

- (a) Sensory nerve (b) Motor nerve
 (c) Mixed nerve (d) Spinal cord

Q.11. Which of the following latitude passes through India?

- (a) Tropic of Cancer. (b) Arctic Circle.
 (c) Antarctic Circle. (d) Tropic of Capricorn.

Q.12. Who out of the four is right?

Abha: tropic of Cancer is 23 ½ degree north.

Ravi: tropic of Capricorn is 23 ½ degree north.

Poonam: tropic of Cancer is 23 ½ degree south.

Charvi: Arctic Circle is 66 ½ degree south.

- (a) Abha (b) Ravi (c) Poonam (d) Charvi

Q.13. Which of the following statement/s is/ are correct?

- (a) **Latitude:** Used to locate a position's distance North or South of the Equator; **Longitude:** Used to locate a position's distance East or West of the Prime Meridian.
 (b) **Latitude:** The lines are parallel to each other; **Longitude:** The lines meet at the North and South Poles.
 (c) **Latitude:** Lines are all of equal length; **Longitude:** Lines vary in length, being maximum at the Equator and minimum at the poles.
 (d) Both (a) and (b)

Q.14. What do we call a mass slide of snow, ice, soil and rock that glides down the mountains during earthquake?

- (a) Focus (b) Avalanche (c) Drought (d) Volcano

Q.15. Statement (S): Earthquake waves are also called seismic waves.

Reason (R): They are generated due to sudden movements in the Earth's crust.

Choose the correct option based on above statement and reason.

- (a) Statement is right but reason is wrong. (b) Statement is wrong but reason is right.

(c) Both statement and reason are right. (d) Both statement and reason are wrong.

- Q.16. In UNIDO, I stands for _____ . (Industries/ International)**
(a) Industries (b) Indian (c) International (d) Information
- Q.17. Security Council is the main body of**
(a) CJI (b) CRY
(c) United Nations (d) UNICEF
- Q.18. UN came into existence on October**
24, 1945 24, 1845 24, 1947 24, 2004
- Q.19. Which of the following is the objective of UN?**
(a) Maintain peace throughout the world.
(b) Develop friendly relationship between nations.
(c) Work together to help people to live better lives.
(d) All of them.
- Q.20. Which of the following UN agencies is related to food and agriculture?**
(a) UNESCAP (b) UNICEF (c) FAO (d) UNIDFW

II. Computational Thinking Skill Question:

5x1=5

- Q.21. Sequencing (Order the Steps)**
When you touch a hot pan:
1. Skin senses heat
2. Sensory nerves carry message to brain
3. Brain sends command through motor nerves
4. Hand pulls away
(a) 1 → 2 → 3 → 4 (b) C. 1 → 3 → 2 → 4
(c) 4 → 3 → 2 → 1 (d) B. 2 → 1 → 3 → 4
- Q.22. Pattern Recognition**
Sensory nerves → Carry messages to brain
Motor nerves → Carry messages to _____
(a) Skin (b) sense organs (c) muscles (d) bones
- Q.23. Logical Thinking**
Which nerves help us feel pain, heat, and touch?
(a) Motor nerves (b) Sensory nerves
(c) Mixed nerves (d) Blood vessels
- Q.24. Flow-Based Thinking**
If eyes see danger → sensory nerves send message → brain processes → _____
(a) muscles react quickly (b) eyes stop working
(c) bones move alone (d) heart stops beating
- Q.25. Debugging (Find the Error)**
A student writes:
“Motor nerves carry messages from muscles to the brain.”
What is incorrect?
(a) Motor nerves carry messages from brain to muscles
(b) Muscles send all messages
(c) Sensory nerves control movement only
(d) No mistake

III. Case Study Based Question:

5x1=5

The Moon is Earth’s natural satellite. Its surface is covered with rocks, mountains,

and many craters formed by meteoroids hitting it. The Moon does not have air or water like Earth. Because there is almost no atmosphere on the Moon, astronauts cannot breathe there without special space suits. The Moon's gravity is much weaker than Earth's gravity, so astronauts can jump much higher on the Moon. Since there is no atmosphere, sounds cannot travel on the Moon.

- Q.26. What is found on the surface of the Moon?**
Q.27. Why do astronauts wear space suits on the Moon?
Q.28. Why can astronauts jump higher on the Moon?
Q.29. Why can sound not travel on the Moon?
Q.30. What causes craters on the Moon's surface?

SECTION B

Do as directed-

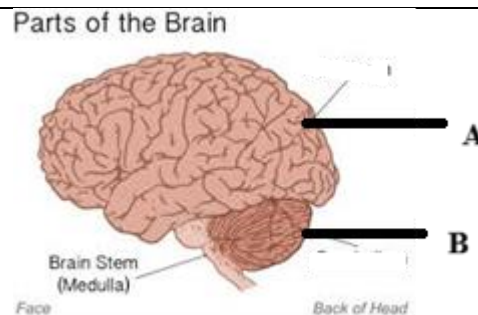
I. Write true or false: **2x 1/2 =1**

- Q.1.** The longest line of latitude is equator.
Q.2. All latitudes are of same size and meet at poles.

II. Give one word for the following: **2x1=2**

- Q.1.** The document describing the formation and functioning of an organization.
Q.2. A network of parallels on the globe which helps to locate places.

III. Label the diagram: **2x1=2**



SECTION C

I. Answer in short: **3x2=6**

- Q.1.** Write the difference between active and extinct volcano.
Q.2. Write the function of sensory nerves and motor nerves.
Q.3. Define pole and axis.

II. Answer in detail: **3x3=9**

- Q.1.** What led to the formation of United Nations? Write any three reasons.
Q.2. Draw the diagram to show solar eclipse.
Q.3. Look at the picture and answer the following questions.



- i. Which natural disaster is shown here?
 ii. Write any two effects of it.